

HOCKEY +



I WILL™

HOCKEY SIZING

M MEN'S SIZE CHART

	XS	SM	MD	LG	XL	2XL	3XL	4XL	5XL
Chest	38 in	40 in	42 in	44 in	46 in	48 in	50 in	52 in	54 in
Waist	30 in	32 in	34 in	36 in	38 in	40 in	42 in	44 in	46 in

W WOMEN'S SIZE CHART

Size	8	10	12	14	16	18	20
Chest	32 in	34 in	36 in	38 in	40 in	42 in	44 in
Waist	25 in	27 in	29 in	31 in	33 in	35 in	37 in

Y YOUTH SIZE CHART

	CHILD	JUNIOR	YXS	YSM	YMD	YLG	YXL
Chest	23 in	25 in	27 in	29 in	31 in	33 in	35-36 in
Waist	16 in	18 in	20 in	22 in	24 in	26 in	28 in

FIT OPTIONS

SCOOPE SUBLIMATED STYLES

Scoop provides a regular fit to keep you cool and comfortable. This loose fit allows free movement, whilst eliminating the weight of extra fabric. Our regular fit maintains an excellent range of motion without restriction, allowing you to keep your mind on your performance.

DYNAMO CUT & SEW STYLES

Dynamo is also designed with a regular fit, keeping you cool, dry and comfortable during your match or training session. The looser fit lets you move freely, and maintain an excellent range of motion, whilst eliminating the bulk of extra fabric.

ADDITIONAL INFORMATION

GEO PRINTS

All our sublimated products can use our Geo Print patterns to give an extra edge to your kit. See the rugby section for print ideas.

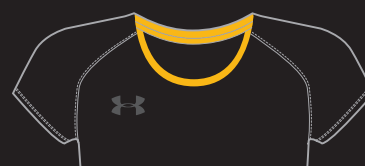
SUBLIMATION



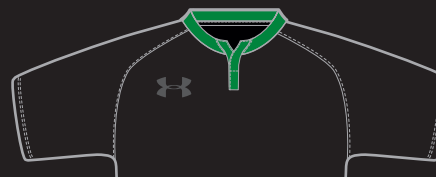
The majority of our hockey products use sublimation to apply the colour to the fabric. This process allows us to use almost any colour in the Pantone colour library for your kit design. Sublimation also means that sponsor logos and numbers/initials are printed into the garment, so there are no additional decoration costs. This applies across all our sports - look out for the Sublimation logo beneath each product.

Gradients and prints can also be applied to further enhance your Under Armour kit. See our range of prints below for more ideas. Prints can be applied to all sublimated playing kit across all sports.

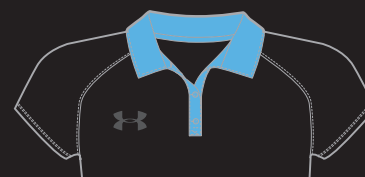
COLLAR STYLES



CREW COLLAR



NOTCH NECK COLLAR



TRADITIONAL COLLAR



WOMENS V COLLAR



SCOOP MEN'S HOCKEY SHIRT H002

XS-3XL // YXS-YXL // 100% POLYESTER

- Fully sublimated design
- Wicking & quick drying to keep you cool & comfortable
- Long and short sleeve option, 3 available collar styles
- Regular fit allowing free movement
- 3 number styles available
- Sublimated logo to right chest and back neck

Sublimated

M Y



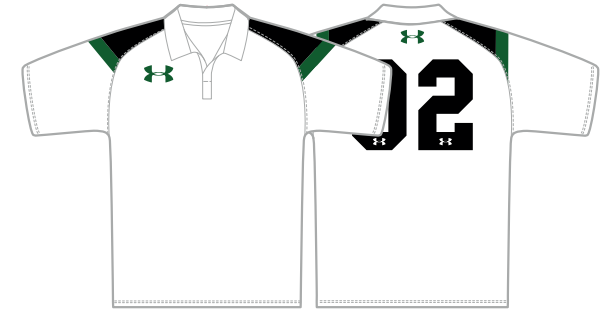
SCOOP MEN'S HOCKEY SHIRT H018

XS-3XL // YXS-YXL // 100% POLYESTER

- Fully sublimated design
- Wicking & quick drying to keep you cool & comfortable
- Long and short sleeve option, 3 available collar styles
- Regular fit allowing free movement
- 3 number styles available
- Sublimated logo to right chest and back neck

Sublimated

M Y



SCOOP MEN'S HOCKEY SHIRT H004

XS-3XL // YXS-YXL // 100% POLYESTER

- Fully sublimated design
- Wicking & quick drying to keep you cool & comfortable
- Long and short sleeve option, 3 available collar styles
- Regular fit allowing free movement
- 3 number styles available
- Sublimated logo to right chest and back neck

Sublimated

M Y



SCOOP MEN'S HOCKEY SHIRT H019

XS-3XL // YXS-YXL // 100% POLYESTER

- Fully sublimated design
- Wicking & quick drying to keep you cool & comfortable
- Long and short sleeve option, 3 available collar styles
- Regular fit allowing free movement
- 3 number styles available
- Sublimated logo to right chest and back neck

Sublimated

M Y



SCOOP MEN'S HOCKEY SHIRT H007

XS-3XL // YXS-YXL // 100% POLYESTER

- Fully sublimated design
- Wicking & quick drying to keep you cool & comfortable
- Long and short sleeve option, 3 available collar styles
- Regular fit allowing free movement
- 3 number styles available
- Sublimated logo to right chest and back neck

Sublimated

M Y



SCOOP MEN'S HOCKEY SHIRT H020

XS-3XL // YXS-YXL // 100% POLYESTER

- Fully sublimated design
- Wicking & quick drying to keep you cool & comfortable
- Long and short sleeve option, 3 available collar styles
- Regular fit allowing free movement
- 3 number styles available
- Sublimated logo to right chest and back neck

Sublimated

M Y



SCOOP MEN'S HOCKEY SHIRT H016

XS-3XL // YXS-YXL // 100% POLYESTER

- Fully sublimated design
- Wicking & quick drying to keep you cool & comfortable
- Long and short sleeve option, 3 available collar styles
- Regular fit allowing free movement
- 3 number styles available
- Sublimated logo to right chest and back neck

Sublimated



SCOOP MEN'S HOCKEY SHIRT H017

XS-3XL // YXS-YXL // 100% POLYESTER

- Fully sublimated design
- Wicking & quick drying to keep you cool & comfortable
- Long and short sleeve option, 3 available collar styles
- Regular fit allowing free movement
- 3 number styles available
- Sublimated logo to right chest and back neck

Sublimated



ESCAPE CONTRAST PANEL SHORT ES030

SIZE 8-20 // YXS-YXL // 100% POLYESTER

- Available in 6", 8" and 10" length
- Wicking and quick drying
- Side pockets
- Contrast stitching and panel detail at back yoke
- Adjustable drawcord to waist
- Embroidered logo to lower right leg



MEN'S GOALKEEPER SHIRT HGK011

XS-3XL // YXS-YXL // 100% POLYESTER

- Fully sublimated design
- Wicking & quick drying to keep you cool & comfortable
- Long and short sleeve option, 3 available collar styles
- Regular fit allowing free movement
- 3 number styles available
- Sublimated logo to right chest and back neck

Sublimated



MEN'S GOALKEEPER SHIRT HGK004

XS-3XL // YXS-YXL // 100% POLYESTER

- Fully sublimated design
- Wicking & quick drying to keep you cool & comfortable
- Long and short sleeve option, 3 available collar styles
- Regular fit allowing free movement
- 3 number styles available
- Sublimated logo to right chest and back neck

Sublimated



SCOOP MEN'S HOCKEY SHORT HSH002

XS-3XL // YXS-YXL // 100% POLYESTER

- Fully sublimated design
- Wicking & quick drying to keep you cool & comfortable
- Adjustable drawcord to waist
- Regular fit allowing free movement
- 3 number styles available
- Sublimated logo to lower right leg

Sublimated





SCOOP WOMEN'S HOCKEY TOP HW013

SIZE 8-20 // YXS-YXL // 100% POLYESTER

- Fully sublimated design
- Wicking & quick drying to keep you cool & comfortable
- Long and short sleeve option, 4 available collar styles
- Regular fit allowing free movement
- 3 number styles available
- Sublimated logo to right chest and back neck

Sublimated



SCOOP WOMEN'S HOCKEY TOP HW002

SIZE 8-20 // YXS-YXL // 100% POLYESTER

- Fully sublimated design
- Wicking & quick drying to keep you cool and comfortable
- Long and short sleeve option, 3 available collar styles
- Regular fit allowing free movement
- 3 number styles available
- Sublimated logo to right chest and back neck

Sublimated



SCOOP WOMEN'S HOCKEY TOP HW014

SIZE 8-20 // YXS-YXL // 100% POLYESTER

- Fully sublimated design
- Wicking & quick drying to keep you cool & comfortable
- Long and short sleeve option, 4 available collar styles
- Regular fit allowing free movement
- 3 number styles available
- Sublimated logo to right chest and back neck

Sublimated



SCOOP WOMEN'S HOCKEY TOP HW012

SIZE 8-20 // YXS-YXL // 100% POLYESTER

- Fully sublimated design
- Wicking & quick drying to keep you cool & comfortable
- Long and short sleeve option, 4 available collar styles
- Regular fit allowing free movement
- 3 number styles available
- Sublimated logo to right chest and back neck

Sublimated



SCOOP WOMEN'S HOCKEY TOP HW015

SIZE 8-20 // YXS-YXL // 100% POLYESTER

- Fully sublimated design
- Wicking & quick drying to keep you cool & comfortable
- Long and short sleeve option, 4 available collar styles
- Regular fit allowing free movement
- 3 number styles available
- Sublimated logo to right chest and back neck

Sublimated



SCOOP WOMEN'S HOCKEY TOP HW016

SIZE 8-20 // YXS-YXL // 100% POLYESTER

- Fully sublimated design
- Wicking & quick drying to keep you cool & comfortable
- Long and short sleeve option, 4 available collar styles
- Regular fit allowing free movement
- 3 number styles available
- Sublimated logo to right chest and back neck

Sublimated





WOMEN'S GOALKEEPER TOP HWGK002

SIZE 8-20 // YXS-YXL // 100% POLYESTER

- Fully sublimated design
- Wicking & quick drying to keep you cool & comfortable
- Long sleeve only, 4 available collar styles
- Regular fit allowing free movement
- 3 number styles available
- Sublimated logo to right chest and back neck

Sublimated

W Y



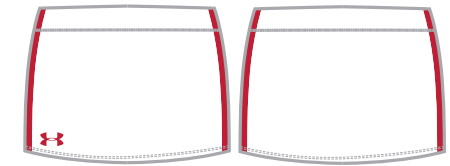
WOMEN'S GOALKEEPER TOP HWGK003

SIZE 8-20 // YXS-YXL // 100% POLYESTER

- Fully sublimated design
- Wicking & quick drying to keep you cool & comfortable
- Long sleeve only, 4 available collar styles
- Regular fit allowing free movement
- 3 number styles available
- Sublimated logo to right chest and back neck

Sublimated

W Y



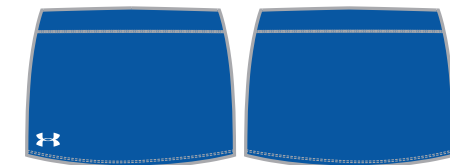
WOMEN'S SUBLIMATED SKORT HWSK001

SIZE 8-20 // YXS-YXL // 82% NYLON, 18% SPANDEX TRICOT

- Fully sublimated design
- Wicking and quick drying to keep you cool & comfortable
- Regular fit allowing free movement
- Available as a skirt or a skort
- Sublimated logo to lower right front

Sublimated

W Y



WOMEN'S SUBLIMATED SKORT HWSK003

SIZE 8-20 // YXS-YXL // 82% NYLON, 18% SPANDEX TRICOT

- Fully sublimated design
- Wicking and quick drying to keep you cool & comfortable
- Regular fit allowing free movement
- Available as a skirt or a skort
- Sublimated logo to lower right front

Sublimated

W Y



Cut & Sew

DYNAMO MEN'S HOCKEY SHIRT HP001

XS-3XL // YXS-YXL // 100% POLYESTER INTERLOCK

- Cut and sew design
- Wicking & quick drying to keep you cool and comfortable
- Short sleeve only, 3 available collar styles
- Regular fit allowing free movement
- 3 number styles available
- Embroidered logo to right chest, back neck & sleeve



Cut & Sew

DYNAMO MEN'S HOCKEY SHORT HCS001

XS-3XL // YXS-YXL // 100% POLYESTER INTERLOCK

- Cut and sew design
- Wicking & quick drying to keep you cool and comfortable
- Adjustable drawcord to waist
- Regular fit allowing free movement
- 3 number styles available
- Embroidered logo to lower right leg

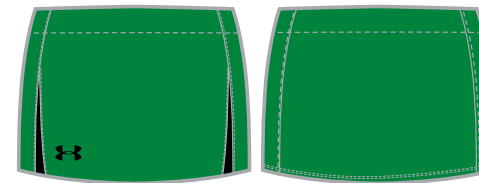


Cut & Sew

DYNAMO WOMEN'S HOCKEY SHIRT HWC001

SIZE 8-20 // YXS-YXL // 100% POLYESTER INTERLOCK

- Cut and sew design
- Wicking & quick drying to keep you cool and comfortable
- Short sleeve only, 4 available collar styles
- Regular fit allowing free movement
- 3 number styles available
- Embroidered logo to right chest, back neck & sleeve



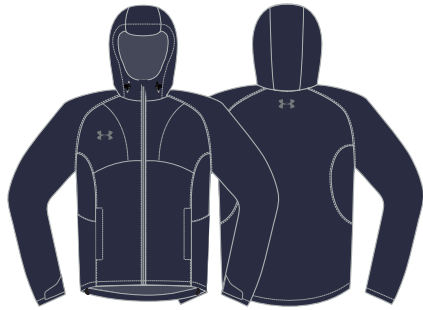
Cut & Sew

DYNAMO WOMEN'S HOCKEY SKORT HWC001

SIZE 8-20 // YXS-YXL // 100% POLYESTER INTERLOCK

- Cut and sew design
- Wicking & quick drying to keep you cool and comfortable
- Available as a skort or a skirt
- Regular fit allowing free movement
- 3 number styles available
- Embroidered logo to lower right front





MENS WATERPROOF JACKET S012

XS-5XL // 100% POLYESTER

- Fully taped waterproof to protect you in all conditions
- Durable yet comfortable woven fabrication
- Volume adjuster to hem and elastic binding on cuff
- Mesh lining to keep you cool and comfortable
- Heasteal logo to right chest and back neck



MENS WATERPROOF TROUSER S013

XS-5XL // 100% POLYESTER

- Fully taped waterproof to protect you in all conditions
- Durable yet comfortable woven fabrication
- Volume adjuster to hem and elastic binding on cuff
- Mesh lining to keep you cool and comfortable
- Heasteal logo to right chest and back neck



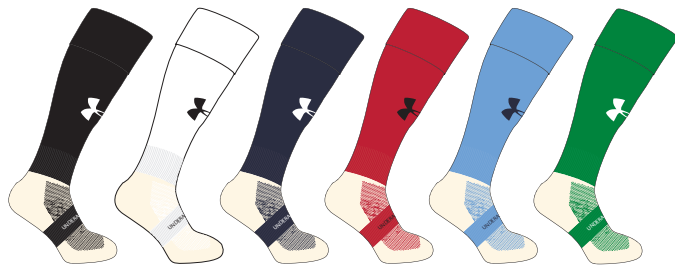
UA TRAINING BIB BIB01

LG & XL // 100% POLYESTER MICRO MESH

- Lightweight fabric
- Reversible design
- Large Under Armour logo to centre chest



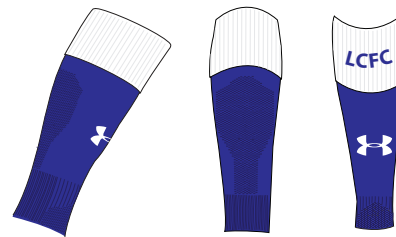
STOCK RANGE



STOCK COOLMAX SOCK TJS001

MD (3-6), LG (7-11), XL (12-14) // LEG: 95% POLYIMIDE, 5% ELASTANE / FOOT: 75% COOLMAX, 25% POLYIMINE

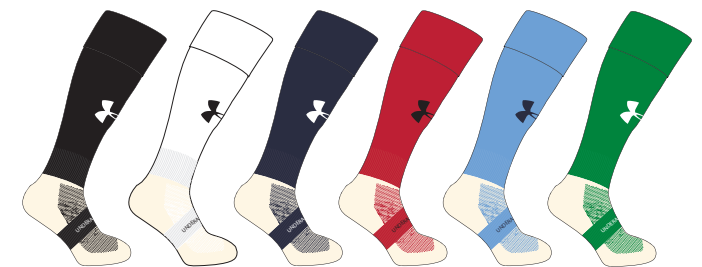
- Keep ahead of the game with the Under Armour stock sock
- Designed and manufactured in the UK, and worn by athletes worldwide
- Superior moisture management and enhanced dry times keep your foot cool & comfortable
- Dependable performance wash after wash
- Under Armour logo to front leg and across foot



BESPOKE SLEEVE SOCK TJS010

MD (3-6), LG (7-11), XL (12-14) // LEG: 95% POLYIMIDE, 5% ELASTANE /

- New sleeve sock design
- Designed and manufactured in the UK, and worn by athletes worldwide
- Superior moisture management and enhanced dry times keep you cool & comfortable
- Dependable performance wash after wash
- Under Armour logo to front leg
- Available in most colours

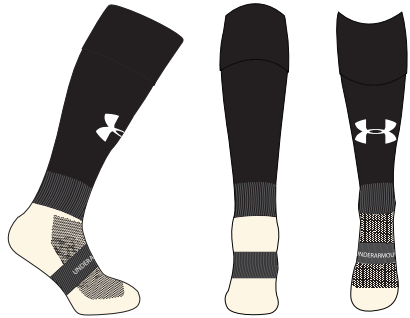


BESPOKE NYLON SOCK TJS011

MD (3-6), LG (7-11), XL (12-14) // LEG: 95% POLYIMIDE, 5% ELASTANE / FOOT: 75% NYLON, 25% POLYIMINE

- Keep ahead of the game with the Under Armour stock sock
- Designed and manufactured in the UK, and worn by athletes worldwide
- Superior moisture management and enhanced dry times keep your foot cool & comfortable
- Dependable performance wash after wash
- Under Armour logo to front leg and across foot





STOCK PLAIN SOCK TJS001

ALL SIZES AVAILABLE // LEG: 95% POLYIMIDE, 5% ELASTANE
// FOOT: 75% COOLMAX, 25% POLYIMINE (NYLON)

- Keep ahead of the game with the UA stock sock
- Designed and manufactured in the UK, worn by athletes worldwide
- Superior moisture management and enhanced dry times keep your foot cool and comfortable
- Dependable performance, wash after wash
- UA logo to front leg and across foot



3 COLOUR HOOPED SOCK TJS002

ALL SIZES AVAILABLE // LEG: 95% POLYIMIDE, 5% ELASTANE
// FOOT: 75% COOLMAX, 25% POLYIMINE (NYLON)

- Keep ahead of the game with the UA hooped sock
- Designed and manufactured in the UK, worn by athletes worldwide
- Superior moisture management and enhanced dry times keep your foot cool and comfortable
- Dependable performance, wash after wash
- UA logo to front leg and across foot



2 COLOUR HOOPED SOCK TJS003

ALL SIZES AVAILABLE // LEG: 95% POLYIMIDE, 5% ELASTANE
// FOOT: 75% COOLMAX, 25% POLYIMINE (NYLON)

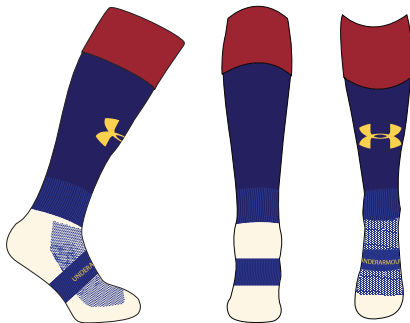
- Keep ahead of the game with the UA hooped sock
- Designed and manufactured in the UK, worn by athletes worldwide
- Superior moisture management and enhanced dry times keep your foot cool and comfortable
- Dependable performance, wash after wash
- UA logo to front leg and across foot



DOUBLE HOOPED SOCK TJS004

ALL SIZES AVAILABLE // LEG: 95% POLYIMIDE, 5% ELASTANE
// FOOT: 75% COOLMAX, 25% POLYIMINE (NYLON)

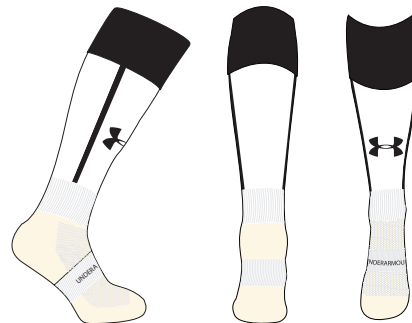
- Keep ahead of the game with the UA hooped sock
- Designed and manufactured in the UK, worn by athletes worldwide
- Superior moisture management and enhanced dry times keep your foot cool and comfortable
- Dependable performance, wash after wash
- UA logo to front leg and across foot



TURNOVER CONTRAST SOCK TJS005

ALL SIZES AVAILABLE // LEG: 95% POLYIMIDE, 5% ELASTANE
// FOOT: 75% COOLMAX, 25% POLYIMINE (NYLON)

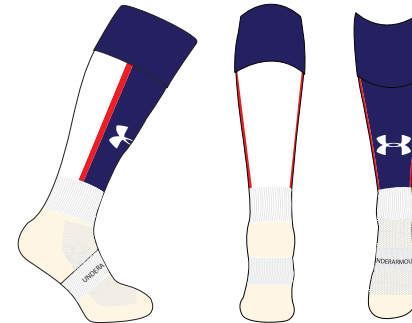
- Keep ahead of the game with the UA turnover sock
- Designed and manufactured in the UK, worn by athletes worldwide
- Superior moisture management and enhanced dry times keep your foot cool and comfortable
- Dependable performance, wash after wash
- UA logo to front leg and across foot



VERTICAL BAR SOCK TJS006

ALL SIZES AVAILABLE // LEG: 95% POLYIMIDE, 5% ELASTANE
// FOOT: 75% COOLMAX, 25% POLYIMINE (NYLON)

- Keep ahead of the game with the UA vertical bar sock
- Designed and manufactured in the UK, worn by athletes worldwide
- Superior moisture management and enhanced dry times keep your foot cool and comfortable
- Dependable performance, wash after wash
- UA logo to front leg and across foot



FRONT PANEL SOCK TJS007

ALL SIZES AVAILABLE // LEG: 95% POLYIMIDE, 5% ELASTANE
// FOOT: 75% COOLMAX, 25% POLYIMINE (NYLON)

- Keep ahead of the game with the UA front panel sock
- Designed and manufactured in the UK, worn by athletes worldwide
- Superior moisture management and enhanced dry times keep your foot cool and comfortable
- Dependable performance, wash after wash
- UA logo to front leg and across foot



PLAIN SOCK TJS008

ALL SIZES AVAILABLE // LEG: 95% POLYIMIDE, 5% ELASTANE
// FOOT: 75% COOLMAX, 25% POLYIMINE (NYLON)

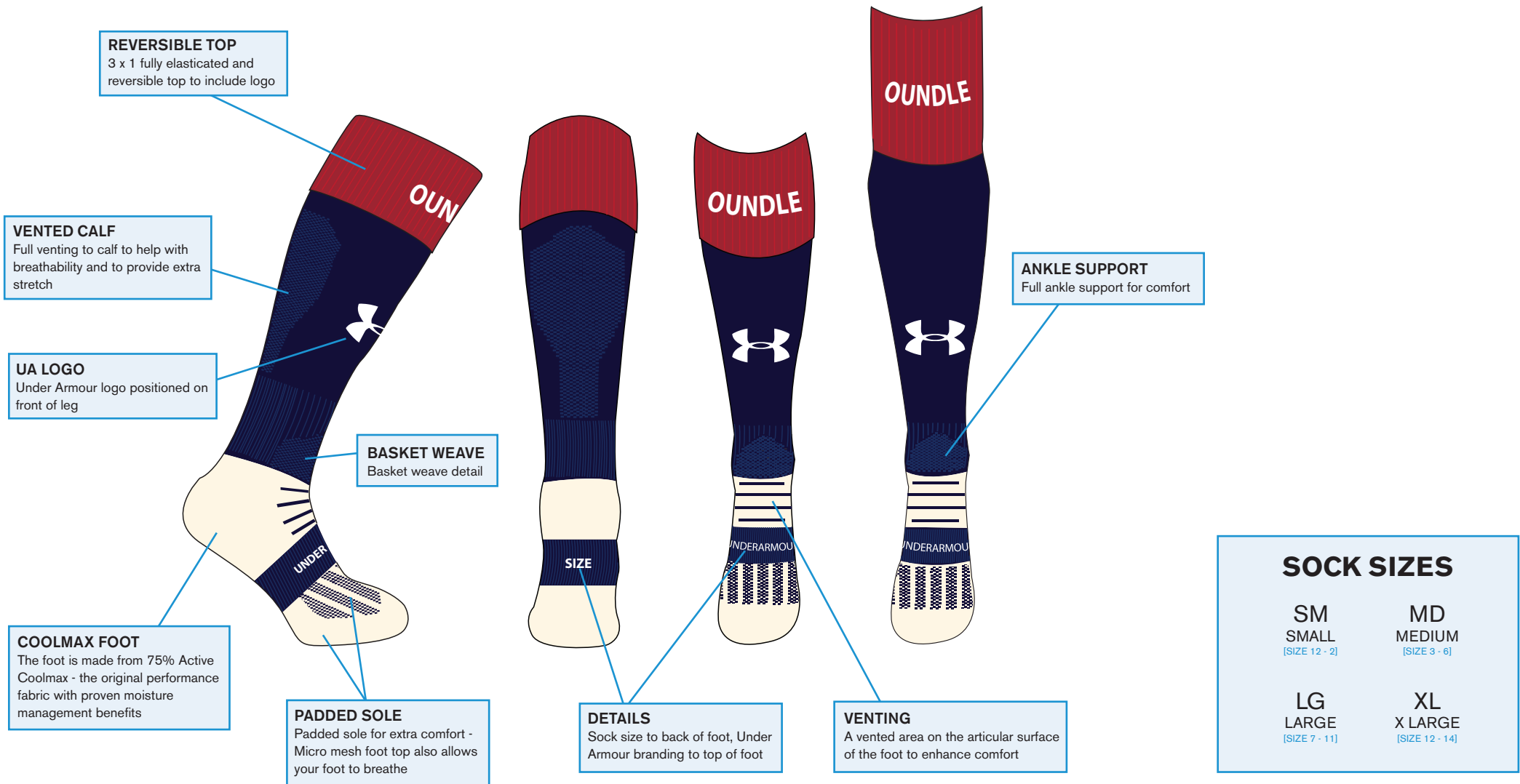
- Keep ahead of the game with the UA plain sock
- Designed and manufactured in the UK, worn by athletes worldwide
- Superior moisture management and enhanced dry times keep your foot cool and comfortable
- Dependable performance, wash after wash
- UA logo to front leg and across foot

COOLMAX

KEEPS YOUR FOOT COOL, DRY & COMFORTABLE.

WHAT IS COOLMAX?

With proven moisture management benefits, Coolmax helps the wearer to remain cool in all situations, ensuring maximum comfort. The Coolmax sock moves moisture away from the foot, resulting in enhanced drying times to keep your foot cool and dry. The performance of the Coolmax sock is a result of the fibre structure, so our socks will continue to perform wash after wash. Our new reversible top sock features updated vents, improved sole padding and improved ankle support to maximise comfort and help improve your performance.



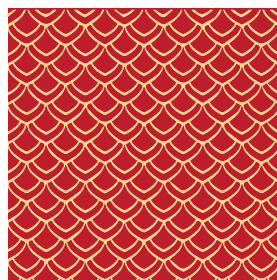
SUBLIMATION



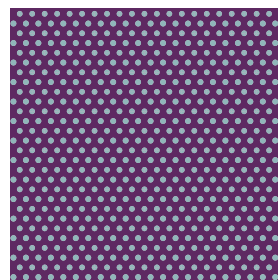
The majority of our rugby shirts use sublimation to apply the colour to the fabric. This process allows us to use almost any colour in the Pantone colour library for your kit design. Sublimation also means that sponsor logos and playing numbers are printed into the garment, so there are no additional decoration costs. This applies across all our sports - look out for the Sublimation logo beneath each product.

Gradients and prints can also be applied to further enhance your Under Armour kit. See our range of prints below for more ideas. Prints can be applied to all sublimated playing kit across all sports.

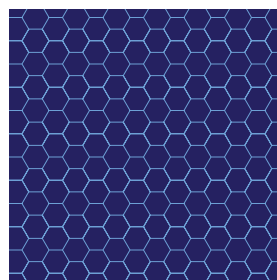
PRINTS



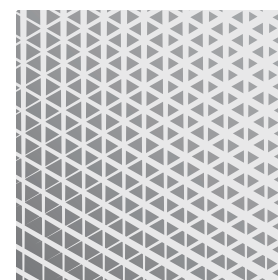
SCALES



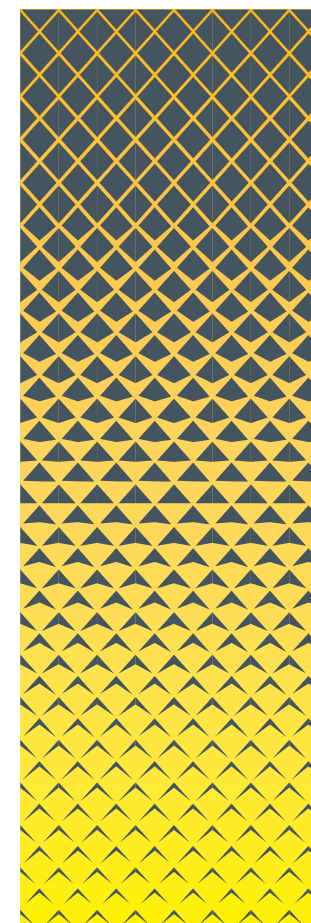
MESH



HONEYCOMB



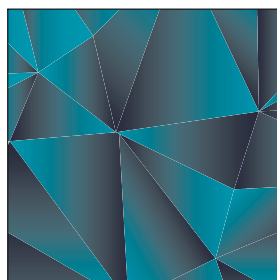
CROSSWIRE



FADE



EXPLOSION



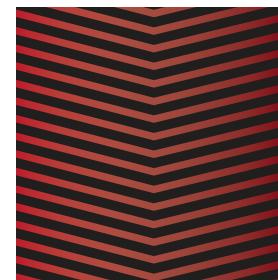
SHATTER



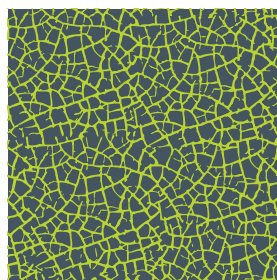
CHECKERS



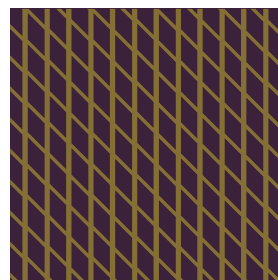
CAMO



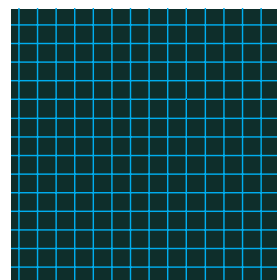
CHEVRON



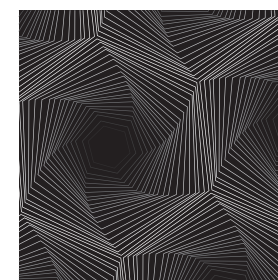
CRACKS



WIRE



GRID



HEXACHROME

UNDER ARMOUR NUMBERS, LETTERS & LOGO DETAILS

NUMBERS & LETTERS

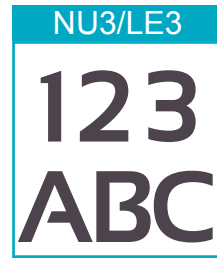
Choose from three styles of number/letter to compliment your on field garments. Whether you're looking for a college style number, a clean, modern typeface, or something more classic, our three styles fit perfectly with our teamwear ranges.



Solid
(1 Colour)



Solid
(1 Colour)



Solid
(1 Colour)



Two Tone
(2 Colour)



Two Tone
(2 Colour)



Two Tone
(2 Colour)

20cm numbers are recommended for the back of both performance and regular fit jerseys, shirts and tops, 5cm numbers for shorts, trackpants, or chest and sleeve positions.

Names can be added across the back shoulders, or as initials on the sleeve/chest. These are available in 5cm and 7cm high lettering. If necessary, we reserve the right to adjust the size/layout of logos, numbers and lettering to fit the garment in the most attractive way possible.

Numbers and names can be sublimated into any of our on-field sublimated garments. There is no additional cost to the garment, and colours can be specified from our 12 core colours, or Pantone (PMS) colours of your choice.

NETBALL PATCHES

Complete your netball kit with a set of UA netball patches. Our patches are fully sublimated to compliment the colour of your dresses or tops. For sublimation, we use the Pantone colour library, allowing us to use almost any colour in your teamwear designs.

PATCH SPECIFICATION

Dimensions: 185mm (w) x 220mm (h)

Colour: Sublimated (all colours available)

Quantity: A full set contains 14 patches (7 positions)

Velcro: 2cm velcro to attach to dresses/tops



EMBROIDERY

A full embroidery service is available for your crest or logo.

If the logo is already set up, the electronic version (the embroidery disc or DST file) will need to be submitted with the order, as well as details of the colours required. Madeira thread shades must be provided, otherwise standard Under Armour colours will be used.

If the logo is not set up electronically, we will require a high resolution logo in order to set up the disc for you. Please explain how you want your logo to appear on both dark and light backgrounds, as well as giving adequate sizing information. You will receive a copy to approve before production.



HEATSEAL & THERMO PRINT

Screen printing and thermo printing are available on selected items. For best results, we require a high resolution logo to be sent to us electronically.

Suitable formats include:

Ai - Adobe Illustrator file

EPS - Vector format

PDF/JPEG - High resolution (300dpi+)

For logos containing text, please provide us with the font name if possible. Pantone (PMS) colours must also be submitted. If no pantone colours are specified, standard Under Armour colours will be used.

Crests and logos can be sublimated into any of our sublimated garments at no additional cost. We still require high quality logos for sublimation, so please use the above points as a guide.

Some fabrics are better suited to some applications methods than others. If you are unsure about choosing the best logo application method, please contact your Under Armour sales representative for more information.

IMPORTANT NOTE: Please ensure you have all necessary permissions before using any logos or imagery. Under Armour Team-sports can not accept any responsibility for the unauthorised use of third party logos or images. Under Armour Team-sports reserve the right to refuse to apply any name or logo considered offensive or unsuitable.

