

MEN'S BESPOKE TRAINING



**LEIGH
HALFPENNY**

I WILL.TM

BESPOKE TRAINING

M MEN'S SIZING

| | XS | SM | MD | LG | XL | 2XL | 3XL | 4XL | 5XL |
|-------|-------|-------|-------|-------|-------|-------|-------|-------|-------|
| Chest | 38 in | 40 in | 42 in | 44 in | 46 in | 48 in | 50 in | 52 in | 54 in |
| Waist | 30 in | 32 in | 34 in | 36 in | 38 in | 40 in | 42 in | 44 in | 46 in |

W WOMEN'S SIZING

| Size | 8 | 10 | 12 | 14 | 16 | 18 | 20 |
|-------|-------|-------|-------|-------|-------|-------|-------|
| Chest | 32 in | 34 in | 36 in | 38 in | 40 in | 42 in | 44 in |
| Waist | 25 in | 27 in | 29 in | 31 in | 33 in | 35 in | 37 in |

Y YOUTH SIZING

| | CHILD | JUNIOR | YXS | YSM | YMD | YLG | YXL |
|-------|-------|--------|-------|-------|-------|-------|----------|
| Chest | 23 in | 25 in | 27 in | 29 in | 31 in | 33 in | 35-36 in |
| Waist | 16 in | 18 in | 20 in | 22 in | 24 in | 26 in | 28 in |

COLOURS

BESPOKE TRAINING

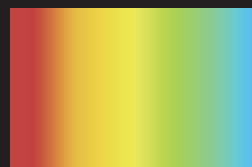
Garments from the Legend, Premier, Escape and Motivate off field ranges are available in the colours shown below:

- BLACK
- WHITE
- RED
- NAVY
- SKY
- ROYAL
- FOREST GREEN
- EMERALD
- MAROON
- GOLD
- PURPLE

CONTRAST STITCH & PIPING

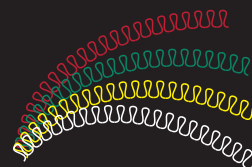
CHARGE PIPING

The Charge range includes contrast piping, which can use a broader colour scheme than the standard cut and sew colours. These can be chosen from the Pantone colour library. For more information, please contact us.



VAULT CONTRAST STITCH

The Vault range includes a contrast stitch which can use a broader colour scheme than the standard cut and sew colours. We can use almost any colour for the contrast stitching, so we can match you off field garments with your team colours.



FIT OPTIONS

UNDER ARMOUR REGULAR FIT

All our bespoke off field garments are designed with a regular fit, eliminating the bulk of extra fabric whilst improving your range of motion. The looser fit allows you to focus on your performance, whilst your kit will deliver the solid performance you'd expect from Under Armour.

Please Note:

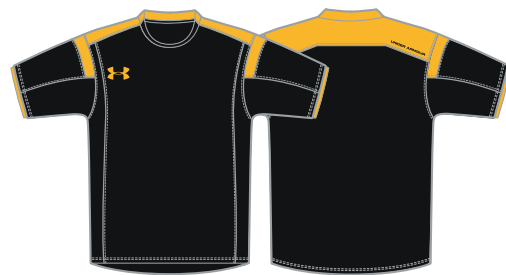
Some garments are not available in all colours shown above. See individual garment information for colour availability.



FLOW TECH™ TEE FL003

XS-5XL // YXS-YXL // 100% POLYESTER

- The newly upgraded essential Under Armour tee
- Lightweight brushed poly fabrication with soft, comfortable hand - with wicking Armourblock technology
- Superior moisture transport and enhanced dry times
- Contrast panels to shoulder and back
- Heatseal logo on right chest and back neck



FLOW CHARGED COTTON TEE FL002

XS-5XL // YXS-YXL // 95% COTTON, 5% ELASTANE

- Charged with moisture wicking, quick dry technology
- Dries faster than ordinary cotton - with Armourblock
- Soft, comfortable pima cotton fabrication
- Built with 4-way stretch for superior comfort and mobility
- Contrast panels to shoulder and back
- Embroidered logo on right chest and back neck



FLOW PERFORMANCE POLO FL004

XS-5XL // YXS-YXL // 95% POLYESTER, 5% ELASTANE

- Superior Heatgear fabric keeps you cool and dry
- Anti-pick and anti-pill finish for long lasting durability
- UPF 30+ protects against harmful sun rays
- Contrast panels to shoulder and back
- 3 buttons to collar
- Embroidered logo on right chest and back neck



FLOW ARMOUR FLEECE HOODY FL005

XS-5XL // YXS-YXL // 100% POLYESTER

- Feels like a cotton sweatshirt, performs like Under Armour
- Hard-faced fleece traps heat for warmth
- Superior moisture transport keeps you dry & comfortable
- Contrast panels to shoulder and back
- Double pocket to front
- Embroidered logo on right chest



FLOW RANGE



FLOW TRACK JACKET FL008

XS-5XL // YXS-YXL // 100% POLYESTER

- Soft and lightweight for extra comfort and mobility
- Superior moisture transport keeps you dry and comfortable
- Mesh lining for breathability, with open vent to back
- Side pockets with zips
- Contrast panels to shoulder and back
- Embroidered logo to right chest and back neck



FLOW TRACKPANT FL009

XS-5XL // YXS-YXL // 100% POLYESTER DOUBLE WEAVE

- Superior moisture transport keeps you dry and comfortable
- Mesh lining for breathability
- Side pockets - no zips
- Available with a full zip or calf zip
- Embroidered logo to upper right leg
- Drawcord to waist, concealed zip to leg



FLOW LS 1/4 ZIP TECH TEE FL029

XS-5XL // YXS-YXL // 100% POLYESTER

- Soft and lightweight for extra comfort and mobility
- Superior moisture transport keeps you dry and comfortable
- Mesh lining for breathability, with open vent to back
- Side pockets with zips
- Contrast panels to shoulder and back
- Heatseal logo to right chest and back neck

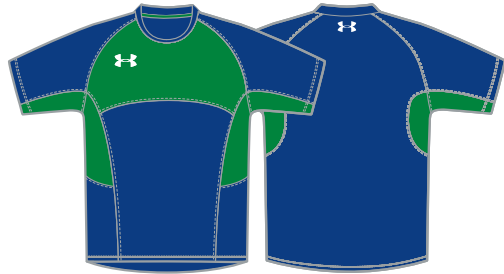


FLOW LS FULL ZIP HOODED TECH TEE FL028

XS-5XL // YXS-YXL // 100% POLYESTER

- Soft and lightweight for extra comfort and mobility
- Superior moisture transport keeps you dry and comfortable
- Mesh lining for breathability, with open vent to back
- Side pockets with zips
- Contrast panels to shoulder and back
- Heatseal logo to right chest and back neck

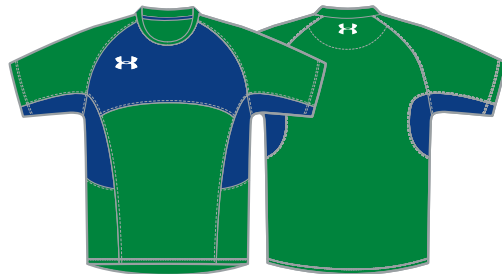




ADVANCE TECH™ TEE AD003

XS-5XL // YXS-YXL // 100% POLYESTER

- The newly upgraded essential Under Armour tee
- Lightweight brushed poly fabrication with soft, comfortable hand - with wicking Armourblock technology
- Superior moisture transport and enhanced dry times
- Contrast panels to chest and under arm
- Heatseal logo on right chest and back neck



ADVANCE CHARGED COTTON TEE AD002

XS-5XL // YXS-YXL // 95% COTTON, 5% ELASTANE

- Charged with moisture wicking, quick dry technology
- Dries faster than ordinary cotton - with Armourblock
- Soft, comfortable pima cotton fabrication
- Built with 4-way stretch for superior comfort and mobility
- Contrast panels to chest and under arm
- Embroidered logo on right chest and back neck



ADVANCE PERFORMANCE POLO AD004

XS-5XL // YXS-YXL // 95% POLYESTER, 5% ELASTANE

- Superior Heatgear fabric keeps you cool and dry
- Anti-pick and anti-pill finish for long lasting durability
- UPF 30+ protects against harmful sun rays
- Contrast panels to chest and under arm
- 3 buttons to collar
- Embroidered logo on right chest and back neck



ADVANCE ARMOUR FLEECE HOODY AD005

XS-5XL // YXS-YXL // 100% POLYESTER

- Feels like a cotton sweatshirt, performs like Under Armour
- Hard-faced fleece traps heat for warmth
- Superior moisture transport keeps you dry & comfortable
- Contrast panels to chest and under arm
- Double pocket to front
- Embroidered logo on right chest



ADVANCE RANGE



ADVANCE TRACK JACKET AD008

XS-5XL // YXS-YXL // 100% POLYESTER

- Soft and lightweight for extra comfort and mobility
- Superior moisture transport keeps you dry and comfortable
- Mesh lining for breathability, with open vent to back
- Side pockets with zips
- Contrast panels to chest and under arm
- Embroidered logo to right chest and back neck



ADVANCE TRACKPANT AD009

XS-5XL // YXS-YXL // 100% POLYESTER DOUBLE WEAVE

- Superior moisture transport keeps you dry and comfortable
- Mesh lining for breathability
- Side pockets - no zips
- Available with a full zip or calf zip
- Embroidered logo to upper right leg
- Drawcord to waist, concealed zip to leg



ADVANCE LS 1/4 ZIP TECH TEE AD029

XS-5XL // YXS-YXL // 100% POLYESTER

- Soft and lightweight for extra comfort and mobility
- Superior moisture transport keeps you dry and comfortable
- Mesh lining for breathability, with open vent to back
- Side pockets with zips
- Contrast panels to chest and under arm
- Heatseal logo to right chest and back neck



ADVANCE LS FULL ZIP HOODED TECH TEE AD028

XS-5XL // YXS-YXL // 100% POLYESTER

- Soft and lightweight for extra comfort and mobility
- Superior moisture transport keeps you dry and comfortable
- Mesh lining for breathability, with open vent to back
- Side pockets with zips
- Contrast panels to chest and under arm
- Heatseal logo to right chest and back neck





CHARGE TECH™ TEE CH003

XS-5XL // YXS-YXL // 100% POLYESTER

- The newly upgraded essential Under Armour tee
- Lightweight brushed poly fabrication with soft, comfortable hand - with wicking Armourblock technology
- Superior moisture transport and enhanced dry times
- Contrast panels to under arm
- Heatseal logo on right chest and back neck



CHARGE CHARGED COTTON TEE CH002

XS-5XL // YXS-YXL // 95% COTTON, 5% ELASTANE

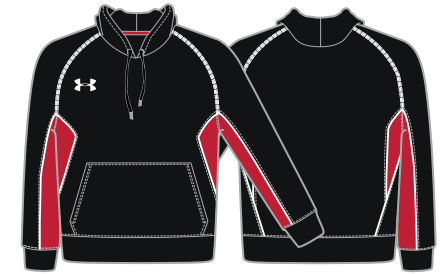
- Charged with moisture wicking, quick dry technology
- Dries faster than ordinary cotton - with Armourblock
- Soft, comfortable pima cotton fabrication
- Built with 4-way stretch for superior comfort and mobility
- Contrast panels to under arm
- Embroidered logo on right chest and back neck



CHARGE PERFORMANCE POLO CH004

XS-5XL // YXS-YXL // 95% POLYESTER, 5% ELASTANE

- Superior Heatgear fabric keeps you cool and dry
- Anti-pick and anti-pill finish for long lasting durability
- UPF 30+ protects against harmful sun rays
- Contrast panels to under arm
- 3 buttons to collar
- Embroidered logo on right chest and back neck



CHARGE ARMOUR FLEECE HOODY CH005

XS-5XL // YXS-YXL // 100% POLYESTER

- Feels like a cotton sweatshirt, performs like Under Armour
- Hard-faced fleece traps heat for warmth
- Superior moisture transport keeps you dry & comfortable
- Contrast panels to under arm
- Double pocket to front
- Embroidered logo on right chest



CHARGE RANGE



CHARGE TRACK JACKET CH008

XS-5XL // YXS-YXL // 100% POLYESTER

- Soft and lightweight for extra comfort and mobility
- Superior moisture transport keeps you dry and comfortable
- Mesh lining for breathability, with open vent to back
- Side pockets with zips
- Contrast panels to under arm
- Embroidered logo to right chest and back neck



CHARGE TRACKPANT CH009

XS-5XL // YXS-YXL // 100% POLYESTER DOUBLE WEAVE

- Superior moisture transport keeps you dry and comfortable
- Mesh lining for breathability
- Side pockets - no zips
- Available with a full zip or calf zip
- Embroidered logo to upper right leg
- Drawcord to waist, concealed zip to leg



CHARGE LS 1/4 ZIP TECH TEE CH029

XS-5XL // YXS-YXL // 100% POLYESTER

- Soft and lightweight for extra comfort and mobility
- Superior moisture transport keeps you dry and comfortable
- Mesh lining for breathability, with open vent to back
- Side pockets with zips
- Contrast panels to under arm
- Heatseal logo to right chest and back neck

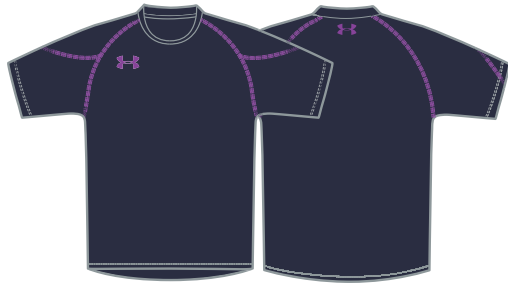


CHARGE LS FULL ZIP HOODED TECH TEE CH028

XS-5XL // YXS-YXL // 100% POLYESTER

- Soft and lightweight for extra comfort and mobility
- Superior moisture transport keeps you dry and comfortable
- Mesh lining for breathability, with open vent to back
- Side pockets with zips
- Contrast panels to under arm
- Heatseal logo to right chest and back neck

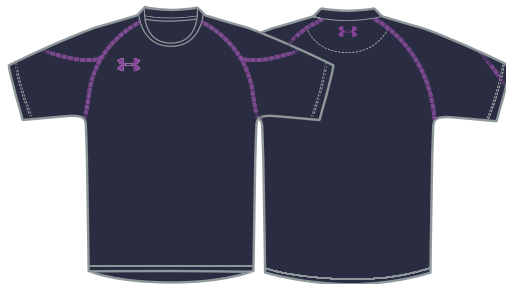




VAULT TECH™ TEE VA003

XS-5XL // YXS-YXL // 100% POLYESTER

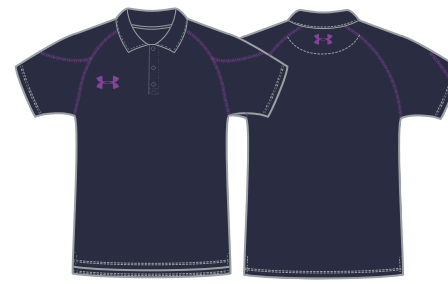
- The newly upgraded essential Under Armour tee
- Lightweight brushed poly fabrication with soft, comfortable hand - with wicking Armourblock technology
- Superior moisture transport and enhanced dry times
- Contrast stitch to arm seam and sleeve
- Heatseal logo on right chest and back neck



VAULT CHARGED COTTON TEE VA002

XS-5XL // YXS-YXL // 95% COTTON, 5% ELASTANE

- Charged with moisture wicking, quick dry technology
- Dries faster than ordinary cotton - with Armourblock
- Soft, comfortable pima cotton fabrication
- Built with 4-way stretch for superior comfort and mobility
- Contrast stitch to arm seam and sleeve
- Embroidered logo on right chest and back neck



VAULT PERFORMANCE POLO VA004

XS-5XL // YXS-YXL // 95% POLYESTER, 5% ELASTANE

- Superior Heatgear fabric keeps you cool and dry
- Anti-pick and anti-pill finish for long lasting durability
- UPF 30+ protects against harmful sun rays
- Contrast stitch to arm seam and sleeve
- 3 buttons to collar
- Embroidered logo on right chest and back neck



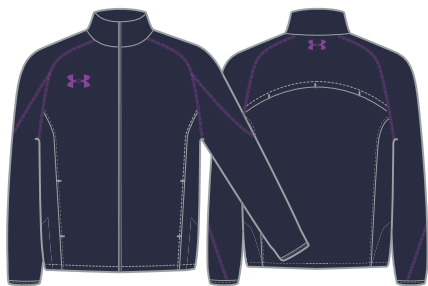
VAULT ARMOUR FLEECE HOODY VA005

XS-5XL // YXS-YXL // 100% POLYESTER

- Feels like a cotton sweatshirt, performs like Under Armour
- Hard-faced fleece traps heat for warmth
- Superior moisture transport keeps you dry & comfortable
- Contrast stitch to arm seam and sleeve
- Double pocket to front
- Embroidered logo on right chest



VAULT RANGE



VAULT TRACK JACKET VA008

XS-5XL // YXS-YXL // 100% POLYESTER

- Soft and lightweight for extra comfort and mobility
- Superior moisture transport keeps you dry and comfortable
- Mesh lining for breathability, with open vent to back
- Side pockets with zips
- Contrast stitch to arm seam and sleeve
- Embroidered logo to right chest and back neck



VAULT TRACKPANT VA009

XS-5XL // YXS-YXL // 100% POLYESTER DOUBLE WEAVE

- Superior moisture transport keeps you dry and comfortable
- Mesh lining for breathability
- Side pockets - no zips
- Available with a full zip or calf zip
- Embroidered logo to upper right leg
- Drawcord to waist, concealed zip to leg



VAULT LS 1/4 ZIP TECH TEE VA029

XS-5XL // YXS-YXL // 100% POLYESTER

- Soft and lightweight for extra comfort and mobility
- Superior moisture transport keeps you dry and comfortable
- Mesh lining for breathability, with open vent to back
- Side pockets with zips
- Contrast stitch to arm seam and sleeve
- Heatseal logo to right chest and back neck

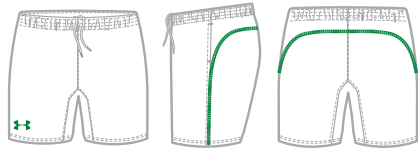


VAULT LS FULL ZIP HOODED TECH TEE VA028

XS-5XL // YXS-YXL // 100% POLYESTER

- Soft and lightweight for extra comfort and mobility
- Superior moisture transport keeps you dry and comfortable
- Mesh lining for breathability, with open vent to back
- Side pockets with zips
- Contrast stitch to arm seam and sleeve
- Heatseal logo to right chest and back neck





ESCAPE ELITE SHORT ES013

XS-5XL // YXS-YXL // 100% POLYESTER DOUBLE WEAVE

- Available in 6", 8" and 10" length
- Wicking and quick drying
- Side pockets - no zips
- Contrast stitching detail to side and rear
- Adjustable drawcord to waist
- Embroidered logo to lower right leg



ESCAPE ELITE SHORT WITH ZIP POCKETS ES015

XS-5XL // YXS-YXL // 100% POLYESTER DOUBLE WEAVE

- Available in 6", 8" and 10" length
- Wicking and quick drying
- Side pockets with zips
- Contrast stitching detail to side and rear
- Adjustable drawcord to waist
- Embroidered logo to lower right leg



ESCAPE ELITE SWIM SHORT S005S

XS-5XL // YXS-YXL // 100% POLYESTER DOUBLE WEAVE

- Available in 6", 8" and 10" length
- Wicking and quick drying
- Inner mesh lining
- Contrast stitching detail to side and rear
- Adjustable drawcord to waist
- Embroidered logo to lower right leg



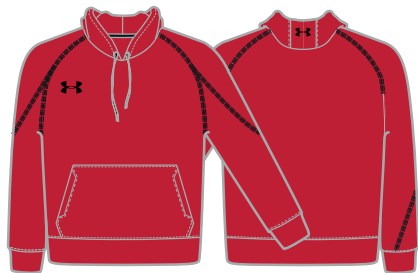
ESCAPE CONTRAST PANEL SHORT ES030

SIZE 8-20 // YXS-YXL // 100% POLYESTER

- Available in 6", 8" and 10" length
- Wicking and quick drying
- Side pockets
- Contrast stitching and panel detail at back yoke
- Adjustable drawcord to waist
- Embroidered logo to lower right leg



VAULT RANGE



VAULT STORM HOODY VA016

XS-5XL // YXS-YXL // 75% COTTON, 25% POLYESTER

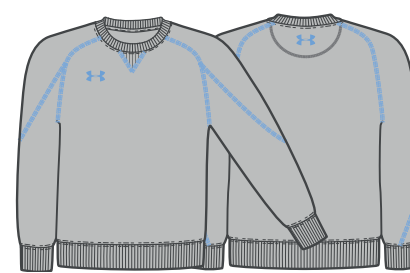
- Soft, mid-weight fleece for warmth and comfort
- Technical water-resistant finish for all-weather protection
- Adjustable drawcord, double pocket to front
- Three panel hood for comfort
- Contrast stitch detail to shoulder
- Embroidered logo to right chest



VAULT STORM FULL ZIP HOODY VA017

XS-5XL // YXS-YXL // 75% COTTON, 25% POLYESTER

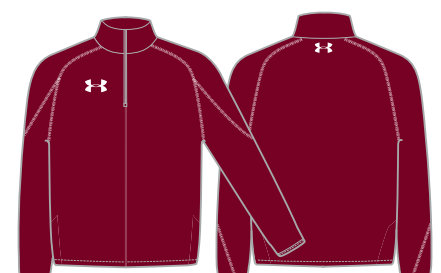
- Soft, mid-weight fleece for warmth and comfort
- Technical water-resistant finish for all-weather protection
- Adjustable drawcord with full length zip to front
- Three panel hood for comfort
- Contrast stitch detail to shoulder
- Embroidered logo to right chest



VAULT STORM CREW SWEAT VA030

XS-5XL // YXS-YXL // 75% COTTON, 25% POLYESTER

- Soft, mid-weight fleece for warmth and comfort
- Technical water resistant finish for all-weather protection
- Crew neck alternative to hoody
- Contrast stitch detail to shoulder
- Embroidered logo to upper sleeves
- Space for initials to right chest, club crest/logo to left chest

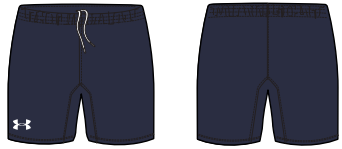


VAULT 1/4 ZIP FLEECE VA007

XS-5XL // 100% POLYESTER

- Advanced high-loft fleece for maximum warmth and comfort
- Microbrushed face provides soft hand & modern aesthetic
- 1/4 zip construction for on demand ventilation
- Contrast stitching to shoulder
- Concealed zip with zip garage
- Embroidered logo on right chest and back neck





FLEECE LEISURE SHORT M034

XS-5XL // YXS-YXL // 75% COTTON 25% POLYESTER

- Available in 10" length
- Soft Fleece Fabric
- Elasticated waistband and drawcord
- Embroidered logo to lower right leg



FOOTBALL 3/4 TRAINING PANT ES028

XS-5XL // YXS-YXL // 100% POLYESTER

- Soft and lightweight for extra comfort and mobility
- Superior moisture transport keeps you dry and comfortable
- Mesh lining for breathability with mesh panels to back of legs
- Side pockets with zips
- Contrast panels to side and shoulder
- Embroidered logo to right chest and back neck



STORM SWEAT PANT VA022

XS-5XL // YXS-YXL // 75% COTTON, 25% POLYESTER

- Superior moisture transport keeps you dry and comfortable
- Water resistant finish to help keep you dry
- Mesh lining for breathability, with open vent to back
- Side seam pockets - no zips
- Adjustable drawcord to waist
- Embroidered logo to upper right leg



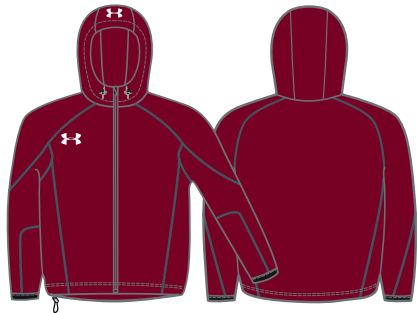
SYNCRO TRAINING PANEL TEE SY001

XS-5XL // YXS-YXL // 100% POLYESTER

- New cut and sew design with stretch mesh panelling
- Wicking and quick drying to keep you cool & comfortable
- Regular fit allowing free movement
- Contrast flatlock stitching detail
- Heatseal logo on right chest



TRAINING RANGE



FULL ZIP CONTACT TRAINING TOP M037

XS-5XL // YXS-YXL // 93% POLYESTER, 7% SPANDEX

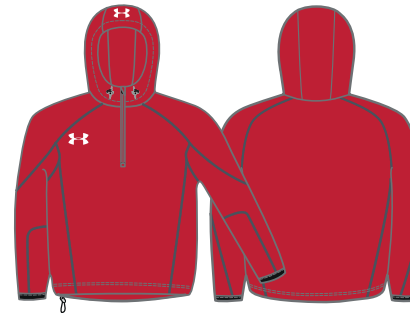
- Superior moisture transport keeps you dry and comfortable
- Mesh lining for breathability
- Two pockets to front with zips
- Adjustable hood, hem and cuff, vent to back
- Contrast stitch detail to shoulder
- Embroidered logo to right chest



CONTACT TRAINING TOP M039

XS-5XL // YXS-YXL // 93% POLYESTER, 7% SPANDEX

- Wind and water resistant to protect you in all conditions
- Durable yet comfortable woven fabrication
- Volume adjuster to hem and elastic binding on cuff
- Mesh lining to keep you cool and comfortable
- Contrast stitch detail to shoulder
- Embroidered logo to right chest



HOODED 1/4 ZIP CONTACT TOP M035

XS-5XL // YXS-YXL // 93% POLYESTER, 7% SPANDEX

- Wind and water resistant to protect you in all conditions
- Durable yet comfortable woven fabrication
- Volume adjuster to hem and elastic binding on cuff
- Mesh lining to keep you cool and comfortable
- Contrast stitch detail to shoulder
- Embroidered logo to right chest



Available in Full Zip M038

1/4 ZIP CONTACT TOP M036

XS-5XL // YXS-YXL // 93% POLYESTER, 7% SPANDEX

- Wind and water resistant to protect you in all conditions
- Durable yet comfortable woven fabrication
- Volume adjuster to hem and elastic binding on cuff
- Mesh lining to keep you cool and comfortable
- Contrast stitch detail to shoulder
- Embroidered logo to right chest



UNDER ARMOUR NUMBERS, LETTERS & LOGO DETAILS

NUMBERS & LETTERS

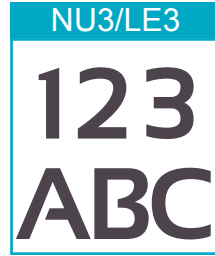
Choose from three styles of number/letter to compliment your on field garments. Whether you're looking for a college style number, a clean, modern typeface, or something more classic, our three styles fit perfectly with our teamwear ranges.



Solid
(1 Colour)



Solid
(1 Colour)



Solid
(1 Colour)



Two Tone
(2 Colour)



Two Tone
(2 Colour)



Two Tone
(2 Colour)

20cm numbers are recommended for the back of both performance and regular fit jerseys, shirts and tops, 5cm numbers for shorts, trackpants, or chest and sleeve positions.

Names can be added across the back shoulders, or as initials on the sleeve/chest. These are available in 5cm and 7cm high lettering. If necessary, we reserve the right to adjust the size/layout of logos, numbers and lettering to fit the garment in the most attractive way possible.

Numbers and names can be sublimated into any of our on-field sublimated garments. There is no additional cost to the garment, and colours can be specified from our 12 core colours, or Pantone (PMS) colours of your choice.

NETBALL PATCHES

Complete your netball kit with a set of UA netball patches. Our patches are fully sublimated to compliment the colour of your dresses or tops. For sublimation, we use the Pantone colour library, allowing us to use almost any colour in your teamwear designs.

PATCH SPECIFICATION

Dimensions: 185mm (w) x 220mm (h)

Colour: Sublimated (all colours available)

Quantity: A full set contains 14 patches (7 positions)

Velcro: 2cm velcro to attach to dresses/tops



EMBROIDERY

A full embroidery service is available for your crest or logo.

If the logo is already set up, the electronic version (the embroidery disc or DST file) will need to be submitted with the order, as well as details of the colours required. Madeira thread shades must be provided, otherwise standard Under Armour colours will be used.

If the logo is not set up electronically, we will require a high resolution logo in order to set up the disc for you. Please explain how you want your logo to appear on both dark and light backgrounds, as well as giving adequate sizing information. You will receive a copy to approve before production.



HEATSEAL & THERMO PRINT

Screen printing and thermo printing are available on selected items. For best results, we require a high resolution logo to be sent to us electronically.

Suitable formats include:

Ai - Adobe Illustrator file

EPS - Vector format

PDF/JPEG - High resolution (300dpi+)

For logos containing text, please provide us with the font name if possible. Pantone (PMS) colours must also be submitted. If no pantone colours are specified, standard Under Armour colours will be used.

Crests and logos can be sublimated into any of our sublimated garments at no additional cost. We still require high quality logos for sublimation, so please use the above points as a guide.

Some fabrics are better suited to some applications methods than others. If you are unsure about choosing the best logo application method, please contact your Under Armour sales representative for more information.

IMPORTANT NOTE: Please ensure you have all necessary permissions before using any logos or imagery. Under Armour Team-sports can not accept any responsibility for the unauthorised use of third party logos or images. Under Armour Team-sports reserve the right to refuse to apply any name or logo considered offensive or unsuitable.

