



NETBALL +



I WILL!

NETBALL SIZING

W WOMEN'S SIZING

Size	8	10	12	14	16	18	20
Chest	32 in	34 in	36 in	38 in	40 in	42 in	44 in
Waist	25 in	27 in	29 in	31 in	33 in	35 in	37 in

Y YOUTH SIZING

	CHILD	JUNIOR	YXS	YSM	YMD	YLG	YXL
Chest	23 in	25 in	27 in	29 in	31 in	33 in	35-36 in
Waist	16 in	18 in	20 in	22 in	24 in	26 in	28 in

STYLE INFORMATION

REBOUND SUBLIMATED STYLES

Incorporates all our fully sublimated netball tops and dresses. Full sublimation allows us to print any colour from the Pantone colour library, so we can get the perfect match for your team colours. All colours, design elements and logos are sublimated into the fabric, and all included within the cost of the garment.

DYNAMO CUT & SEW STYLES

Our Dynamo netball range feature a cut & sew design using solid dyed fabric as opposed to the printing process involved in sublimation. We offer a range of popular team colours, as well as several different design options from sleeve to back styles. Please note that the colour range available for cut & sew is much more limited than sublimation.

NETBALL PATCHES

Complete your netball kit with a set of UA netball patches. Our patches are fully sublimated to compliment the colour of your dresses or tops. For sublimation, we use the Pantone colour library, allowing us to use almost any colour in your teamwear designs. One set of patches includes seven positions, with two patches for each. All include velcro as standard.

Dimensions: 185mm (w) x 220mm (h)

Colour: Sublimated (all colours available)

Quantity: A full set contains 14 patches (7 positions)

Velcro: 1cm velcro on both patches and dresses

SLEEVE/BACK STYLES



SL SLEEVELESS



SS SHORT SLEEVE*



SB SLEEVELESS BACK



RB RACERBACK

*Not available on netball dresses

SUBLIMATION



The majority of our netball products use sublimation to apply the colour to the fabric. This process allows us to use almost any colour in the Pantone colour library for your kit design. Sublimation also means that sponsor logos and numbers/initials are printed into the garment, so there are no additional decoration costs. This applies across all our sports - look out for the Sublimation logo beneath each product.

Gradients and prints can also be applied to further enhance your Under Armour kit. See our range of prints below for more ideas. Prints can be applied to all sublimated playing kit across all sports.





REBOUND NETBALL TOP N001

SIZE 8-20 // YXS-YXL // 100% POLYESTER

- Fully sublimated design
- Wicking and quick drying to keep you cool & comfortable
- Streamlined fit eliminates the bulk of extra fabric
- Available in short sleeve, sleeveless and racerback
- Sublimated logo to right chest and back neck

Sublimated



REBOUND NETBALL TOP N004

SIZE 8-20 // YXS-YXL // 100% POLYESTER

- Fully sublimated design
- Wicking and quick drying to keep you cool & comfortable
- Streamlined fit eliminates the bulk of extra fabric
- Available in short sleeve, sleeveless and racerback
- Sublimated logo to right chest and back neck

Sublimated



REBOUND NETBALL TOP N005

SIZE 8-20 // YXS-YXL // 100% POLYESTER

- Fully sublimated design
- Wicking and quick drying to keep you cool & comfortable
- Streamlined fit eliminates the bulk of extra fabric
- Available in short sleeve, sleeveless and racerback
- Sublimated logo to right chest and back neck

Sublimated



REBOUND NETBALL TOP N011

SIZE 8-20 // YXS-YXL // 100% POLYESTER

- Fully sublimated design
- Wicking and quick drying to keep you cool & comfortable
- Streamlined fit eliminates the bulk of extra fabric
- Available in short sleeve, sleeveless and racerback
- Sublimated logo to right chest and back neck

Sublimated



REBOUND NETBALL TOP N007

SIZE 8-20 // YXS-YXL // 100% POLYESTER

- Fully sublimated design
- Wicking and quick drying to keep you cool & comfortable
- Streamlined fit eliminates the bulk of extra fabric
- Available in short sleeve, sleeveless and racerback
- Sublimated logo to right chest and back neck

Sublimated

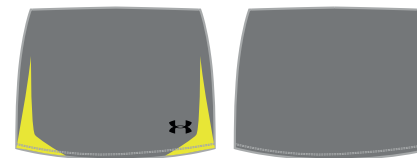


REBOUND NETBALL TOP N008

SIZE 8-20 // YXS-YXL // 100% POLYESTER

- Fully sublimated design
- Wicking and quick drying to keep you cool & comfortable
- Streamlined fit eliminates the bulk of extra fabric
- Available in short sleeve, sleeveless and racerback
- Sublimated logo to right chest and back neck

Sublimated

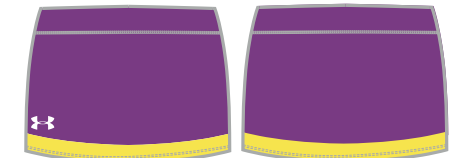


REBOUND NETBALL SKORT NSK002

SIZE 8-20 // YXS-YXL // 82% NYLON, 18% SPANDEX

- Fully sublimated design
- Wicking and quick drying to keep you cool and comfortable
- Streamlined fit eliminates the bulk of extra fabric
- Available as a skirt or a skort
- Sublimated logo to lower right front

Sublimated



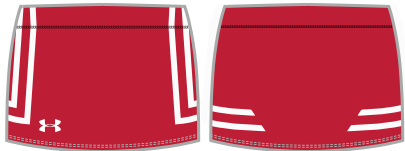
REBOUND NETBALL SKORT NSK003

SIZE 8-20 // YXS-YXL // 82% NYLON, 18% SPANDEX

- Fully sublimated design
- Wicking and quick drying to keep you cool & comfortable
- Streamlined fit eliminates the bulk of extra fabric
- Available in short sleeve, sleeveless and racerback
- Sublimated logo to right chest and back neck

Sublimated





REBOUND NETBALL SKORT NSK004

SIZE 8-20 // YXS-YXL // 82% NYLON, 18% SPANDEX

- Fully sublimated design
- Wicking and quick drying to keep you cool and comfortable
- Streamlined fit eliminates the bulk of extra fabric
- Available as a skirt or a skort
- Sublimated logo to lower right front

Sublimated



REBOUND NETBALL DRESS ND015

SIZE 8-20 // YXS-YXL // 82% NYLON, 18% SPANDEX

- Fully sublimated design
- Wicking and quick drying to keep you cool & comfortable
- Streamlined fit eliminates the bulk of extra fabric
- Available in sleeveless and racerback
- Sublimated logo to right chest and back neck

Sublimated



REBOUND NETBALL DRESS ND004

SIZE 8-20 // YXS-YXL // 82% NYLON, 18% SPANDEX

- Fully sublimated design
- Wicking and quick drying to keep you cool & comfortable
- Streamlined fit eliminates the bulk of extra fabric
- Available in sleeveless and racerback
- Sublimated logo to right chest and back neck

Sublimated



REBOUND NETBALL DRESS ND006

SIZE 8-20 // YXS-YXL // 82% NYLON, 18% SPANDEX

- Fully sublimated design
- Wicking and quick drying to keep you cool & comfortable
- Streamlined fit eliminates the bulk of extra fabric
- Available in sleeveless and racerback
- Sublimated logo to right chest and back neck

Sublimated



REBOUND NETBALL DRESS ND007

SIZE 8-20 // YXS-YXL // 82% NYLON, 18% SPANDEX

- Fully sublimated design
- Wicking and quick drying to keep you cool & comfortable
- Streamlined fit eliminates the bulk of extra fabric
- Available in sleeveless and racerback
- Sublimated logo to right chest and back neck

Sublimated



REBOUND NETBALL DRESS ND008

SIZE 8-20 // YXS-YXL // 82% NYLON, 18% SPANDEX

- Fully sublimated design
- Wicking and quick drying to keep you cool & comfortable
- Streamlined fit eliminates the bulk of extra fabric
- Available in sleeveless and racerback
- Sublimated logo to right chest and back neck

Sublimated



REBOUND NETBALL DRESS ND014

SIZE 8-20 // YXS-YXL // 82% NYLON, 18% SPANDEX

- Fully sublimated design
- Wicking and quick drying to keep you cool & comfortable
- Streamlined fit eliminates the bulk of extra fabric
- Available in sleeveless and racerback
- Sublimated logo to right chest and back neck

Sublimated



REBOUND NETBALL DRESS ND011

SIZE 8-20 // YXS-YXL // 82% NYLON, 18% SPANDEX

- Fully sublimated design
- Wicking and quick drying to keep you cool & comfortable
- Streamlined fit eliminates the bulk of extra fabric
- Available in sleeveless and racerback
- Sublimated logo to right chest and back neck

Sublimated





REBOUND NETBALL DRESS ND001

SIZE 8-20 // YXS-YXL // 82% NYLON, 18% SPANDEX

- Fully sublimated design
- Wicking and quick drying to keep you cool & comfortable
- Streamlined fit eliminates the bulk of extra fabric
- Available in both sleeveless and racerback
- Sublimated logo to right chest and back neck

Sublimated

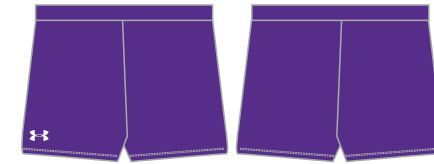


REBOUND NETBALL DRESS ND009

SIZE 8-20 // YXS-YXL // 82% NYLON, 18% SPANDEX

- Fully sublimated design
- Wicking and quick drying to keep you cool & comfortable
- Streamlined fit eliminates the bulk of extra fabric
- Available in both sleeveless and racerback
- Sublimated logo to right chest and back neck

Sublimated



WOMEN'S NETBALL LYCRA SHORT NS001

SIZE 8-20 // YXS-YXL // 91% POLYESTER, 9% SPANDEX

- New fully sublimated design
- Wicking and quick drying to keep you cool and comfortable
- Close fitting
- Sublimated logo to lower right front

Sublimated



Cut & Sew

DYNAMO NETBALL DRESS NDC01

SIZE 8-20 // YXS-YXL // 100% POLYESTER INTERLOCK

- Cut and sew design
- Wicking and quick drying to keep you cool & comfortable
- Streamlined fit eliminates the bulk of extra fabric
- Available in both sleeveless and racerback
- Embroidered logo to right chest, back neck & mid back

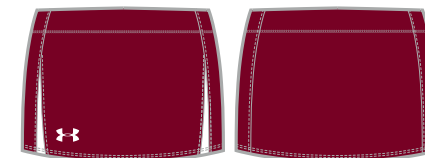


Cut & Sew

DYNAMO NETBALL TOP NC011

SIZE 8-20 // YXS-YXL // 100% POLYESTER INTERLOCK

- Cut and sew design
- Wicking and quick drying to keep you cool and comfortable
- Streamlined fit eliminates the bulk of extra fabric
- Available in both short sleeve and sleeveless styles
- Embroidered logo to right chest and back neck



Cut & Sew

DYNAMO NETBALL SKORT NCSK011

SIZE 8-20 // YXS-YXL // 100% POLYESTER INTERLOCK

- Cut and sew design
- Wicking and quick drying to keep you cool & comfortable
- Streamlined fit eliminates the bulk of extra fabric
- Available as a skirt or a skort
- Embroidered logo to lower right front



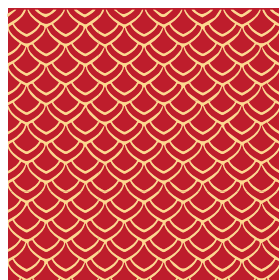
SUBLIMATION



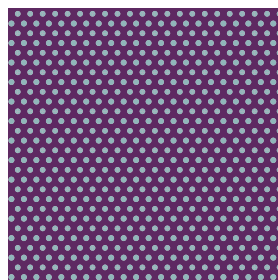
The majority of our rugby shirts use sublimation to apply the colour to the fabric. This process allows us to use almost any colour in the Pantone colour library for your kit design. Sublimation also means that sponsor logos and playing numbers are printed into the garment, so there are no additional decoration costs. This applies across all our sports - look out for the Sublimation logo beneath each product.

Gradients and prints can also be applied to further enhance your Under Armour kit. See our range of prints below for more ideas. Prints can be applied to all sublimated playing kit across all sports.

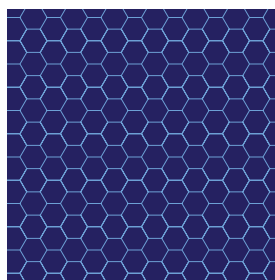
PRINTS



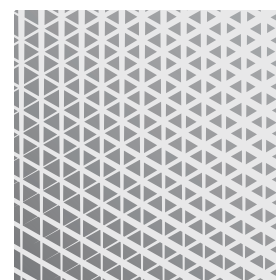
SCALES



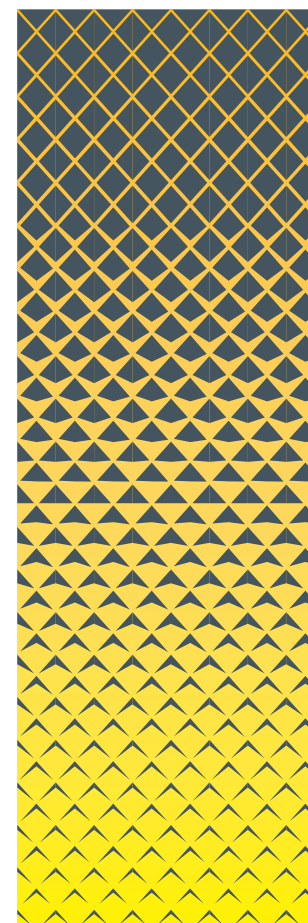
MESH



HONEYCOMB



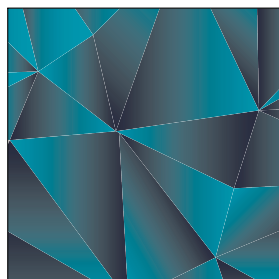
CROSSWIRE



FADE



EXPLOSION



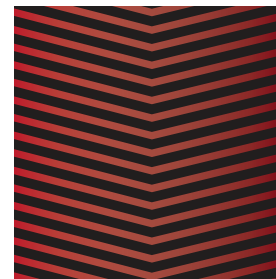
SHATTER



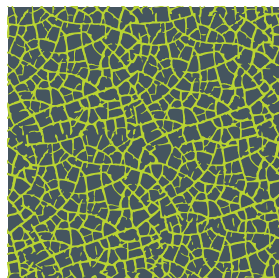
CHECKERS



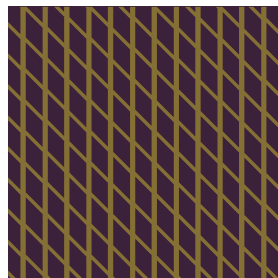
CAMO



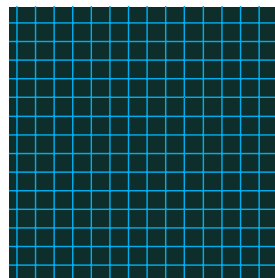
CHEVRON



CRACKS



WIRE



GRID



HEXACHROME

UNDER ARMOUR NUMBERS, LETTERS & LOGO DETAILS

NUMBERS & LETTERS

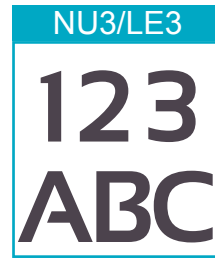
Choose from three styles of number/letter to compliment your on field garments. Whether you're looking for a college style number, a clean, modern typeface, or something more classic, our three styles fit perfectly with our teamwear ranges.



Solid
(1 Colour)



Solid
(1 Colour)



Solid
(1 Colour)



Two Tone
(2 Colour)



Two Tone
(2 Colour)



Two Tone
(2 Colour)

20cm numbers are recommended for the back of both performance and regular fit jerseys, shirts and tops, 5cm numbers for shorts, trackpants, or chest and sleeve positions.

Names can be added across the back shoulders, or as initials on the sleeve/chest. These are available in 5cm and 7cm high lettering. If necessary, we reserve the right to adjust the size/layout of logos, numbers and lettering to fit the garment in the most attractive way possible.

Numbers and names can be sublimated into any of our on-field sublimated garments. There is no additional cost to the garment, and colours can be specified from our 12 core colours, or Pantone (PMS) colours of your choice.

NETBALL PATCHES

Complete your netball kit with a set of UA netball patches. Our patches are fully sublimated to compliment the colour of your dresses or tops. For sublimation, we use the Pantone colour library, allowing us to use almost any colour in your teamwear designs.

PATCH SPECIFICATION

Dimensions: 185mm (w) x 220mm (h)

Colour: Sublimated (all colours available)

Quantity: A full set contains 14 patches (7 positions)

Velcro: 2cm velcro to attach to dresses/tops

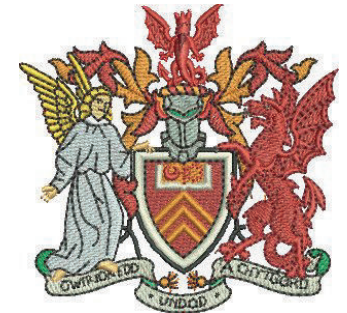


EMBROIDERY

A full embroidery service is available for your crest or logo.

If the logo is already set up, the electronic version (the embroidery disc or DST file) will need to be submitted with the order, as well as details of the colours required. Madeira thread shades must be provided, otherwise standard Under Armour colours will be used.

If the logo is not set up electronically, we will require a high resolution logo in order to set up the disc for you. Please explain how you want your logo to appear on both dark and light backgrounds, as well as giving adequate sizing information. You will receive a copy to approve before production.



HEATSEAL & THERMO PRINT

Screen printing and thermo printing are available on selected items. For best results, we require a high resolution logo to be sent to us electronically.

Suitable formats include:

Ai - Adobe Illustrator file

EPS - Vector format

PDF/JPEG - High resolution (300dpi+)

For logos containing text, please provide us with the font name if possible. Pantone (PMS) colours must also be submitted. If no pantone colours are specified, standard Under Armour colours will be used.

Crests and logos can be sublimated into any of our sublimated garments at no additional cost. We still require high quality logos for sublimation, so please use the above points as a guide.

Some fabrics are better suited to some applications methods than others. If you are unsure about choosing the best logo application method, please contact your Under Armour sales representative for more information.

IMPORTANT NOTE: Please ensure you have all necessary permissions before using any logos or imagery. Under Armour Team-sports can not accept any responsibility for the unauthorised use of third party logos or images. Under Armour Team-sports reserve the right to refuse to apply any name or logo considered offensive or unsuitable.

