

WOMEN'S BESPOKE TRAINING +



**SLOANE
STEPHENS**

I WILL.

BESPOKE TRAINING

M MEN'S SIZING

	XS	SM	MD	LG	XL	2XL	3XL	4XL	5XL
Chest	38 in	40 in	42 in	44 in	46 in	48 in	50 in	52 in	54 in
Waist	30 in	32 in	34 in	36 in	38 in	40 in	42 in	44 in	46 in

W WOMEN'S SIZING

Size	8	10	12	14	16	18	20
Chest	32 in	34 in	36 in	38 in	40 in	42 in	44 in
Waist	25 in	27 in	29 in	31 in	33 in	35 in	37 in

Y YOUTH SIZING

	CHILD	JUNIOR	YXS	YSM	YMD	YLG	YXL
Chest	23 in	25 in	27 in	29 in	31 in	33 in	35-36 in
Waist	16 in	18 in	20 in	22 in	24 in	26 in	28 in

COLOURS

BESPOKE TRAINING

Garments from the Legend, Premier, Escape and Motivate off field ranges are available in the colours shown below:

- BLACK
- WHITE
- RED
- NAVY
- SKY
- ROYAL
- FOREST GREEN
- EMERALD
- MAROON
- GOLD
- PURPLE

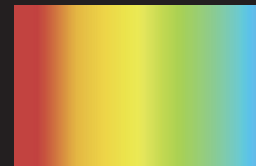
Please Note:

Some garments are not available in all colours shown above. See individual garment information for colour availability.

CONTRAST STITCH & PIPING

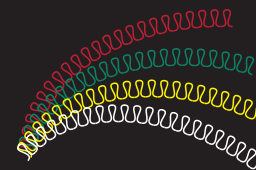
CHARGE PIPING

The Charge range includes contrast piping, which can use a broader colour scheme than the standard cut and sew colours. These can be chosen from the Pantone colour library. For more information, please contact us.



VAULT CONTRAST STITCH

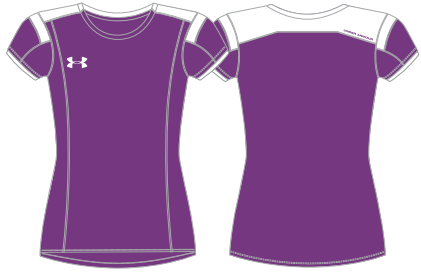
The Vault range includes a contrast stitch which can use a broader colour scheme than the standard cut and sew colours. We can use almost any colour for the contrast stitching, so we can match you off field garments with your team colours.



FIT OPTIONS

UNDER ARMOUR REGULAR FIT

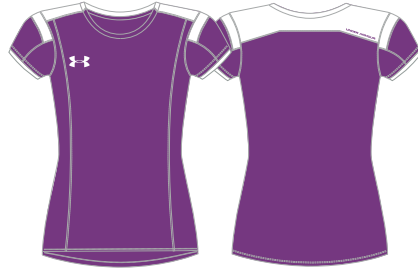
All our bespoke off field garments are designed with a regular fit, eliminating the bulk of extra fabric whilst improving your range of motion. The looser fit allows you to focus on your performance, whilst your kit will deliver the solid performance you'd expect from Under Armour.



FLOW TECH™ TEE WFL011

SIZE 8-20 // YXS-YXL // 100% POLYESTER

- The newly upgraded essential Under Armour tee
- Lightweight brushed poly fabrication with soft, comfortable hand - with wicking Armourblock technology
- Superior moisture transport and enhanced dry times
- Contrast panels to shoulder and back
- Heatseal logo on right chest and back neck



FLOW CHARGED COTTON TEE WFL010

SIZE 8-20 // YXS-YXL // 95% COTTON, 5% ELASTANE

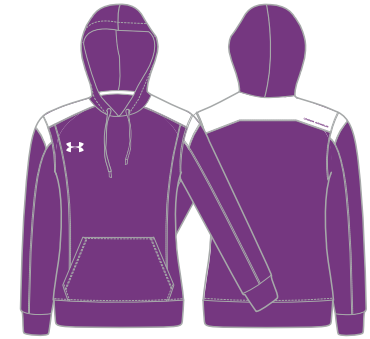
- Charged with moisture wicking, quick dry technology
- Dries faster than ordinary cotton - with Armourblock
- Soft, comfortable pima cotton fabrication
- Built with 4-way stretch for superior comfort and mobility
- Contrast panels to shoulder and back
- Embroidered logo on right chest and back neck



FLOW PERFORMANCE POLO WFL012

SIZE 8-20 // YXS-YXL // 95% POLYESTER, 5% ELASTANE

- Lightweight Heatgear fabric keeps you cool and dry
- Anti-pick and anti-pill finish for long lasting durability
- UPF 30+ protects against harmful sun rays
- Contrast panels to shoulder and back
- 3 buttons to collar
- Embroidered logo on right chest and back neck



FLOW ARMOUR FLEECE HOODY WFL013

SIZE 8-20 // YXS-YXL // 100% POLYESTER

- Feels like a cotton sweatshirt, performs like Under Armour
- Hard-faced fleece traps heat for warmth
- Superior moisture transport keeps you dry & comfortable
- Contrast panels to shoulder and back
- Double pocket to front
- Embroidered logo on right chest and lower right back



FLOW RANGE



FLOW TRACK JACKET WFL016

SIZE 8-20 // YXS-YXL // 100% POLYESTER

- Soft and lightweight for extra comfort and mobility
- Superior moisture transport keeps you dry and comfortable
- Mesh lining for breathability, with open vent to back
- Side pockets with zips
- Contrast panels to shoulder and back
- Embroidered logo to right chest and back neck



FLOW TRACKPANT WFL017

SIZE 8-20 // YXS-YXL // 100% POLYESTER

- Soft and lightweight for extra comfort and mobility
- Superior moisture transport keeps you dry and comfortable
- Mesh lining for breathability
- Side pockets - no zips, drawcord to waist, concealed zip
- Contrast side panels to upper leg
- Embroidered logo to upper left leg



FLOW LS 1/4 ZIP TECH TEE WFL029

XS-5XL // YXS-YXL // 100% POLYESTER

- Soft and lightweight for extra comfort and mobility
- Superior moisture transport keeps you dry and comfortable
- Mesh lining for breathability, with open vent to back
- Side pockets with zips
- Contrast panels to shoulder and back
- Heatseal logo to right chest and back neck

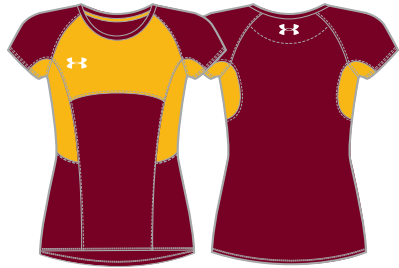


FLOW LS FULL ZIP HOODED TECH TEE WFL028

XS-5XL // YXS-YXL // 100% POLYESTER

- Soft and lightweight for extra comfort and mobility
- Superior moisture transport keeps you dry and comfortable
- Mesh lining for breathability, with open vent to back
- Side pockets with zips
- Contrast panels to shoulder and back
- Heatseal logo to right chest and back neck





ADVANCE TECH™ TEE WAD011

SIZE 8-20 // YXS-YXL // 100% POLYESTER

- The newly upgraded essential Under Armour tee
- Lightweight brushed poly fabrication with soft, comfortable hand - with wicking Armourblock technology
- Superior moisture transport and enhanced dry times
- Contrast panels to chest and under arm
- Heatseal logo on right chest and back neck



ADVANCE CHARGED COTTON TEE WAD010

SIZE 8-20 // YXS-YXL // 95% COTTON, 5% ELASTANE

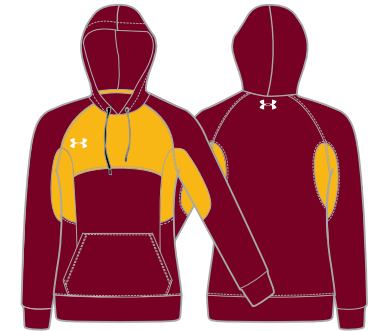
- Charged with moisture wicking, quick dry technology
- Dries faster than ordinary cotton - with Armourblock
- Soft, comfortable pima cotton fabrication
- Built with 4-way stretch for superior comfort and mobility
- Contrast panels to chest and under arm
- Embroidered logo on right chest and back neck



ADVANCE PERFORMANCE POLO WAD012

SIZE 8-20 // YXS-YXL // 95% POLYESTER, 5% ELASTANE

- Lightweight Heatgear fabric keeps you cool and dry
- Anti-pick and anti-pill finish for long lasting durability
- UPF 30+ protects against harmful sun rays
- Contrast panels to chest and under arm
- 3 buttons to collar
- Embroidered logo on right chest and back neck



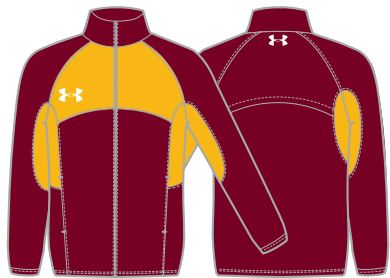
ADVANCE ARMOUR FLEECE HOODY WAD013

SIZE 8-20 // YXS-YXL // 100% POLYESTER

- Feels like a cotton sweatshirt, performs like Under Armour
- Hard-faced fleece traps heat for warmth
- Superior moisture transport keeps you dry & comfortable
- Contrast panels to chest and under arm
- Double pocket to front
- Embroidered logo on right chest and lower right back



ADVANCE RANGE



ADVANCE TRACK JACKET WAD016

SIZE 8-20 // YXS-YXL // 100% POLYESTER

- Soft and lightweight for extra comfort and mobility
- Superior moisture transport keeps you dry and comfortable
- Mesh lining for breathability, with open vent to back
- Side pockets with zips
- Contrast panels to chest and under arm
- Embroidered logo to right chest and back neck



ADVANCE TRACKPANT WAD017

SIZE 8-20 // YXS-YXL // 100% POLYESTER

- Soft and lightweight for extra comfort and mobility
- Superior moisture transport keeps you dry and comfortable
- Mesh lining for breathability
- Side pockets - no zips, drawcord to waist, concealed zip
- Contrast side panels to upper leg
- Embroidered logo to upper left leg



ADVANCE LS 1/4 ZIP TECH TEE WAD029

XS-5XL // YXS-YXL // 100% POLYESTER

- Soft and lightweight for extra comfort and mobility
- Superior moisture transport keeps you dry and comfortable
- Mesh lining for breathability, with open vent to back
- Side pockets with zips
- Contrast panels to shoulder and back
- Heatseal logo to right chest and back neck



ADVANCE LS FULL ZIP HOODED TECH TEE WAD028

XS-5XL // YXS-YXL // 100% POLYESTER

- Soft and lightweight for extra comfort and mobility
- Superior moisture transport keeps you dry and comfortable
- Mesh lining for breathability, with open vent to back
- Side pockets with zips
- Contrast panels to shoulder and back
- Heatseal logo to right chest and back neck





CHARGE TECH™ TEE WCH011

SIZE 8-20 // YXS-YXL // 100% POLYESTER

- The newly upgraded essential Under Armour tee
- Lightweight brushed poly fabrication with soft, comfortable hand - with wicking Armourblock technology
- Superior moisture transport and enhanced dry times
- Contrast panels to chest and under arm
- Heatseal logo on right chest and back neck



CHARGE CHARGED COTTON TEE WCH010

SIZE 8-20 // YXS-YXL // 95% COTTON, 5% ELASTANE

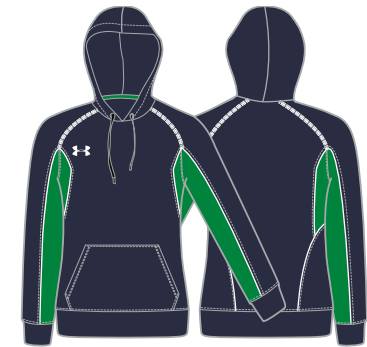
- Charged with moisture wicking, quick dry technology
- Dries faster than ordinary cotton - with Armourblock
- Soft, comfortable pima cotton fabrication
- Built with 4-way stretch for superior comfort and mobility
- Contrast panels to chest and under arm
- Embroidered logo on right chest and back neck



CHARGE PERFORMANCE POLO WCH012

SIZE 8-20 // YXS-YXL // 95% POLYESTER, 5% ELASTANE

- Lightweight Heatgear fabric keeps you cool and dry
- Anti-pick and anti-pill finish for long lasting durability
- UPF 30+ protects against harmful sun rays
- Contrast panels to chest and under arm
- 3 buttons to collar
- Embroidered logo on right chest and back neck



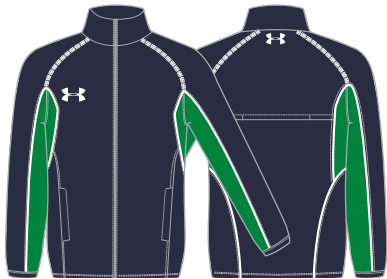
CHARGE ARMOUR FLEECE HOODY WCH013

SIZE 8-20 // YXS-YXL // 100% POLYESTER

- Feels like a cotton sweatshirt, performs like Under Armour
- Hard-faced fleece traps heat for warmth
- Superior moisture transport keeps you dry & comfortable
- Contrast panels to chest and under arm
- Double pocket to front
- Embroidered logo on right chest and lower right back



CHARGE RANGE



CHARGE TRACK JACKET WCH016

SIZE 8-20 // YXS-YXL // 100% POLYESTER

- Soft and lightweight for extra comfort and mobility
- Superior moisture transport keeps you dry and comfortable
- Mesh lining for breathability, with open vent to back
- Side pockets with zips
- Contrast panels to chest and under arm
- Embroidered logo to right chest and back neck



CHARGE TRACKPANT WCH017

SIZE 8-20 // YXS-YXL // 100% POLYESTER

- Soft and lightweight for extra comfort and mobility
- Superior moisture transport keeps you dry and comfortable
- Mesh lining for breathability
- Side pockets - no zips, drawcord to waist, concealed zip
- Contrast side panels to upper leg
- Embroidered logo to upper left leg



CHARGE LS 1/4 ZIP TECH TEE WCH029

XS-5XL // YXS-YXL // 100% POLYESTER

- Soft and lightweight for extra comfort and mobility
- Superior moisture transport keeps you dry and comfortable
- Mesh lining for breathability, with open vent to back
- Side pockets with zips
- Contrast panels to shoulder and back
- Heatseal logo to right chest and back neck



CHARGE LS FULL ZIP HOODED TECH TEE WCH028

XS-5XL // YXS-YXL // 100% POLYESTER

- Soft and lightweight for extra comfort and mobility
- Superior moisture transport keeps you dry and comfortable
- Mesh lining for breathability, with open vent to back
- Side pockets with zips
- Contrast panels to shoulder and back
- Heatseal logo to right chest and back neck





VAULT TECH™ TEE WVA011

SIZE 8-20 // YXS-YXL // 100% POLYESTER

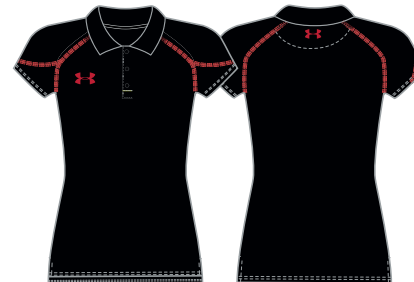
- The newly upgraded essential Under Armour tee
- Lightweight brushed poly fabrication with soft, comfortable hand - with wicking Armourblock technology
- Superior moisture transport and enhanced dry times
- Contrast stitch to arm seam and sleeve
- Heatseal logo on right chest and back neck



VAULT CHARGED COTTON TEE WVA010

SIZE 8-20 // YXS-YXL // 95% COTTON, 5% ELASTANE

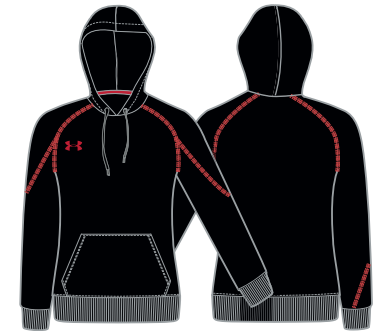
- Charged with moisture wicking, quick dry technology
- Dries faster than ordinary cotton - with Armourblock
- Soft, comfortable pima cotton fabrication
- Built with 4-way stretch for superior comfort and mobility
- Contrast stitch to arm seam and sleeve
- Embroidered logo on right chest and back neck



VAULT PERFORMANCE POLO WVA012

SIZE 8-20 // YXS-YXL // 95% POLYESTER, 5% ELASTANE

- Lightweight Heatgear fabric keeps you cool and dry
- Anti-pick and anti-pill finish for long lasting durability
- UPF 30+ protects against harmful sun rays
- Contrast stitch to arm seam and sleeve
- 3 buttons to collar
- Embroidered logo on right chest and back neck



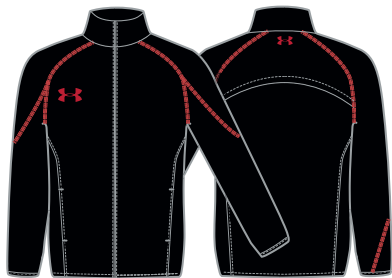
VAULT ARMOUR FLEECE HOODY WVA013

SIZE 8-20 // YXS-YXL // 100% POLYESTER

- Feels like a cotton sweatshirt, performs like Under Armour
- Hard-faced fleece traps heat for warmth
- Superior moisture transport keeps you dry & comfortable
- Contrast stitch to arm seam and sleeve
- Double pocket to front
- Embroidered logo on right chest and lower right back



VAULT RANGE



VAULT TRACK JACKET WVA016

SIZE 8-20 // YXS-YXL // 100% POLYESTER

- Soft and lightweight for extra comfort and mobility
- Superior moisture transport keeps you dry and comfortable
- Mesh lining for breathability, with open vent to back
- Side pockets with zips
- Contrast stitch to arm seam and sleeve
- Embroidered logo to right chest and back neck



VAULT TRACKPANT WVA017

SIZE 8-20 // YXS-YXL // 100% POLYESTER

- Soft and lightweight for extra comfort and mobility
- Superior moisture transport keeps you dry and comfortable
- Mesh lining for breathability
- Side pockets - no zips, drawcord to waist, concealed zip
- Contrast stitch to back
- Embroidered logo to upper left leg



VAULT LS 1/4 ZIP TECH TEE WVA028

XS-5XL // YXS-YXL // 100% POLYESTER

- Soft and lightweight for extra comfort and mobility
- Superior moisture transport keeps you dry and comfortable
- Mesh lining for breathability, with open vent to back
- Side pockets with zips
- Contrast stitch to arm seam and sleeve
- Heatseal logo to right chest and back neck

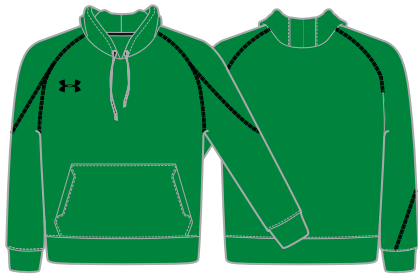


VAULT LS FULL ZIP HOODED TECH TEE WVA029

XS-5XL // YXS-YXL // 100% POLYESTER

- Soft and lightweight for extra comfort and mobility
- Superior moisture transport keeps you dry and comfortable
- Mesh lining for breathability, with open vent to back
- Side pockets with zips
- Contrast stitch to arm seam and sleeve
- Heatseal logo to right chest and back neck





VAULT STORM HOODY WVA021

SIZE 8-20 // YXS-YXL // 75% COTTON, 25% POLYESTER

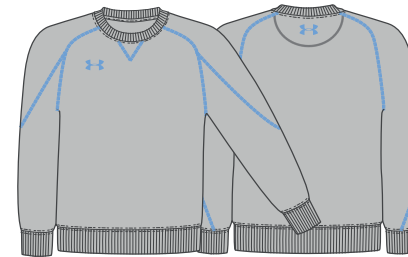
- Soft, mid-weight fleece for warmth and comfort
- Technical water-resistant finish for all-weather protection
- Adjustable drawcord, double pocket to front
- Three panel hood for comfort
- Contrast stitch detail to shoulder
- Embroidered logo to right chest



VAULT STORM FULL ZIP HOODY WES022

SIZE 8-20 // YXS-YXL // 75% COTTON, 25% POLYESTER

- Soft, mid-weight fleece for warmth and comfort
- Technical water-resistant finish for all-weather protection
- Adjustable drawcord with full length zip to front
- Three panel hood for comfort
- Contrast stitch detail to shoulder
- Embroidered logo to right chest



VAULT STORM CREW SWEAT WVA030

SIZE 8-20 // YXS-YXL // 75% COTTON, 25% POLYESTER

- Soft, mid-weight fleece for warmth and comfort
- Technical water resistant finish for all-weather protection
- Crew neck alternative to hoody
- Contrast stitch detail to shoulder
- Space for initials to right chest
- Embroidered logo to right chest



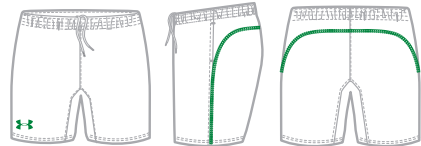
VAULT 1/4 ZIP FLEECE WVA015

SIZE 8-20 // 100% POLYESTER

- Advanced high-loft fleece for maximum warmth and comfort
- Microbrushed face provides soft hand & modern aesthetic
- 1/4 zip construction for on demand ventilation
- Contrast stitching to shoulder
- Concealed zip with zip garage
- Embroidered logo on right chest and back neck



VAULT RANGE



ESCAPE ELITE SHORT WES020

SIZE 8-20 // YXS-YXL // 100% POLYESTER DOUBLE WEAVE

- Available in 6", 8" and 10" length
- Wicking and quick drying
- Side pockets - no zips
- Contrast stitching detail to side and rear
- Adjustable drawcord to waist
- Embroidered logo to lower right leg



ESCAPE ELITE SHORT WITH ZIP POCKETS WES032

SIZE 8-20 // YXS-YXL // 100% POLYESTER DOUBLE WEAVE

- Available in 6", 8" and 10" length
- Wicking and quick drying
- Side pockets with zips
- Contrast stitching detail to side and rear
- Embroidered logo to lower right leg



ESCAPE CONTRAST PANEL SHORT WES034

SIZE 8-20 // YXS-YXL // 100% POLYESTER

- Available in 6", 8" and 10" length
- Wicking and quick drying
- Side pockets
- Contrast stitching detail to side and rear
- Embroidered logo to lower right leg

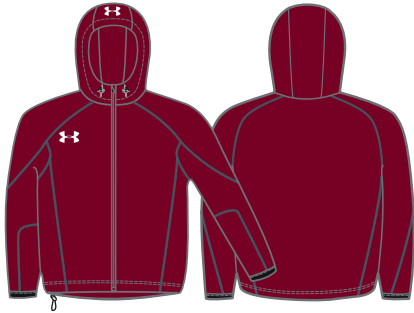


ESCAPE FITTED SHORT WES035

SIZE 8-20 // YXS-YXL // 100% POLYESTER

- Available in 6", 8" and 10" length
- Wicking and quick drying
- Side pockets
- Contrast stitching detail to side and rear
- Embroidered logo to lower right leg





FULL ZIP CONTACT TOP WM035

SIZE 8-20 // YXS-YXL // 93% POLYESTER, 7% SPANDEX

- Superior moisture transport keeps you dry and comfortable
- Mesh lining for breathability
- Two pockets to front with zips
- Adjustable hood, hem and cuff, vent to back
- Contrast stitch detail to shoulder
- Embroidered logo to right chest



CONTACT TOP WM038

SIZE 8-20 // YXS-YXL // 93% POLYESTER, 7% SPANDEX

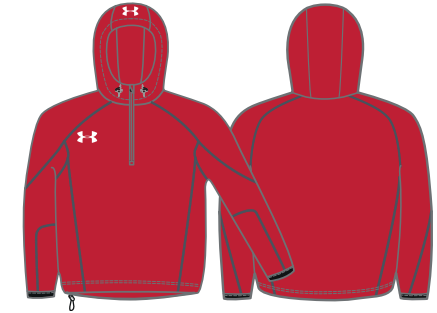
- Wind and water resistant to protect you in all conditions
- Durable yet comfortable woven fabrication
- Volume adjuster to hem and elastic binding on cuff
- Mesh lining to keep you cool and comfortable
- Contrast stitch detail to shoulder
- Embroidered logo to right chest



1/4 ZIP CONTACT TOP WMO36

XS-5XL // YXS-YXL // 93% POLYESTER, 7% SPANDEX

- Wind and water resistant to protect you in all conditions
- Durable yet comfortable woven fabrication
- Volume adjuster to hem and elastic binding on cuff
- Mesh lining to keep you cool and comfortable
- Contrast stitch detail to shoulder
- Embroidered logo to right chest



HOODED 1/4 ZIP CONTACT TOP WMO32

XS-5XL // YXS-YXL // 93% POLYESTER, 7% SPANDEX

- Wind and water resistant to protect you in all conditions
- Durable yet comfortable woven fabrication
- Volume adjuster to hem and elastic binding on cuff
- Mesh lining to keep you cool and comfortable
- Contrast stitch detail to shoulder
- Embroidered logo to right chest



TRAINING RANGE



STORM SWEAT PANT WVA027

SIZE 8-20 // YXS-YXL // 75% COTTON, 25% POLYESTER

- Superior moisture transport keeps you dry and comfortable
- Water resistant finish to help keep you dry
- Mesh lining for breathability, with open vent to back
- Side seam pockets - no zips
- Adjustable drawcord to waist
- Embroidered logo to upper right leg



SYNCRO TRAINING PANEL TEE WSY001

XS-5XL // YXS-YXL // 100% POLYESTER

- New cut and sew design with stretch mesh panelling
- Wicking and quick drying to keep you cool and comfortable
- Regular fit allowing free movement
- Contrast flatlock stitching detail
- Heatseal logo on right chest



UNDER ARMOUR NUMBERS, LETTERS & LOGO DETAILS

NUMBERS & LETTERS

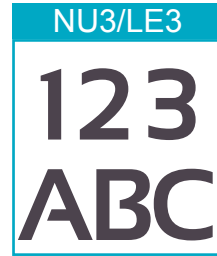
Choose from three styles of number/letter to compliment your on field garments. Whether you're looking for a college style number, a clean, modern typeface, or something more classic, our three styles fit perfectly with our teamwear ranges.



Solid
(1 Colour)



Solid
(1 Colour)



Solid
(1 Colour)



Two Tone
(2 Colour)



Two Tone
(2 Colour)



Two Tone
(2 Colour)

20cm numbers are recommended for the back of both performance and regular fit jerseys, shirts and tops, 5cm numbers for shorts, trackpants, or chest and sleeve positions.

Names can be added across the back shoulders, or as initials on the sleeve/chest. These are available in 5cm and 7cm high lettering. If necessary, we reserve the right to adjust the size/layout of logos, numbers and lettering to fit the garment in the most attractive way possible.

Numbers and names can be sublimated into any of our on-field sublimated garments. There is no additional cost to the garment, and colours can be specified from our 12 core colours, or Pantone (PMS) colours of your choice.

NETBALL PATCHES

Complete your netball kit with a set of UA netball patches. Our patches are fully sublimated to compliment the colour of your dresses or tops. For sublimation, we use the Pantone colour library, allowing us to use almost any colour in your teamwear designs.

PATCH SPECIFICATION

Dimensions: 185mm (w) x 220mm (h)

Colour: Sublimated (all colours available)

Quantity: A full set contains 14 patches (7 positions)

Velcro: 2cm velcro to attach to dresses/tops



EMBROIDERY

A full embroidery service is available for your crest or logo.

If the logo is already set up, the electronic version (the embroidery disc or DST file) will need to be submitted with the order, as well as details of the colours required. Madeira thread shades must be provided, otherwise standard Under Armour colours will be used.

If the logo is not set up electronically, we will require a high resolution logo in order to set up the disc for you. Please explain how you want your logo to appear on both dark and light backgrounds, as well as giving adequate sizing information. You will receive a copy to approve before production.



HEATSEAL & THERMO PRINT

Screen printing and thermo printing are available on selected items. For best results, we require a high resolution logo to be sent to us electronically.

Suitable formats include:

Ai - Adobe Illustrator file

EPS - Vector format

PDF/JPEG - High resolution (300dpi+)

For logos containing text, please provide us with the font name if possible. Pantone (PMS) colours must also be submitted. If no pantone colours are specified, standard Under Armour colours will be used.

Crests and logos can be sublimated into any of our sublimated garments at no additional cost. We still require high quality logos for sublimation, so please use the above points as a guide.

Some fabrics are better suited to some applications methods than others. If you are unsure about choosing the best logo application method, please contact your Under Armour sales representative for more information.

IMPORTANT NOTE: Please ensure you have all necessary permissions before using any logos or imagery. Under Armour Team-sports can not accept any responsibility for the unauthorised use of third party logos or images. Under Armour Team-sports reserve the right to refuse to apply any name or logo considered offensive or unsuitable.

